

PARTS LIST FOR

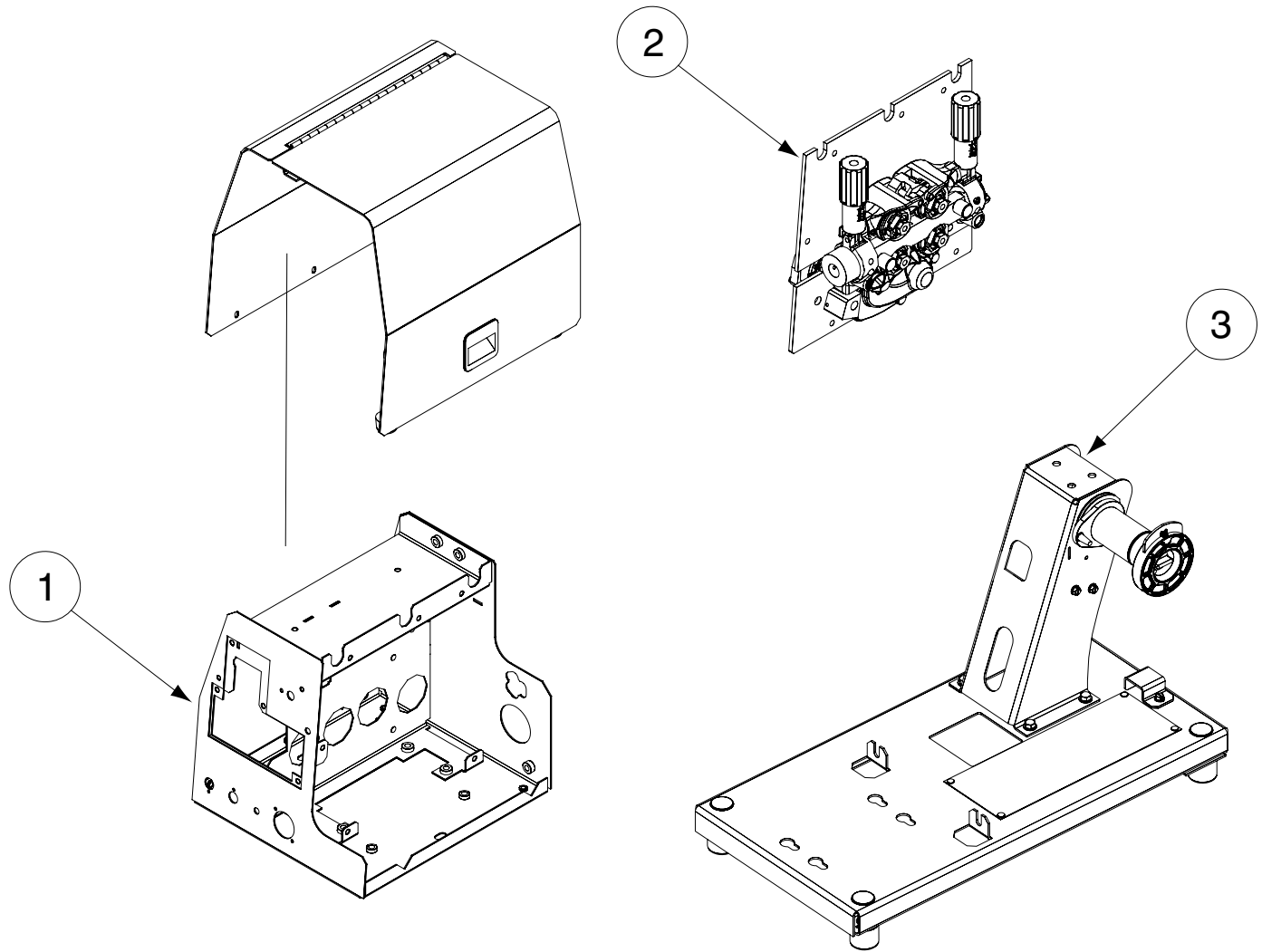
LF-74

Index of Sub Assemblies
Illustration of Sub Assemblies
Index of Sub Assemblies
Illustration of Sub Assemblies
Index of Sub Assemblies
Illustration of Sub Assemblies
Index of Sub Assemblies
Illustration of Sub Assemblies

LF-74



ILLUSTRATION OF SUB-ASSEMBLIES



Index of Sub Assemblies

LF-74

For Codes: 11195, 11196 & 11197

Do Not use this Parts List for a machine if its code number is not listed. Contact the Service Department for any code numbers not listed.

Use the Illustration of Sub-Assemblies page and the table below to determine which sub assembly page and column the desired part is located on for your particular code machine.

Sub Assembly Item No.			1	2	3				
SUB ASSEMBLY PAGE NAME		Optional Equipment Listing	Control Box, Center Panel & Case Shell Assembly	Wire Drive Assembly	K1524-3 Wire Reel Stand & Base				
PAGE NO.		P-518-B.1	P-518-C	P-518-D	P-518-E				
CODE NO.									
11195 (K2426-1)		1	1	1	•				
11196 (K2426-2)		1	1	1	1				
11197 (K2426-3)		1	2	2	1				

#



Illustration of Sub Assemblies

OPTIONAL EQUIPMENT LISTING

Miscellaneous Options Available for your machine are listed below:

Indicates a change this printing.

ITEM	DESCRIPTION	PART NO.	QTY.	1	2	3	4	5	6	7	8	9	10	11	12
	Remote Voltage Control Kit	K2329-1	1	X											
	Timer Kit	K2330-1	1	X											
	Standard Duty Wire Reel Stand	K2328-1	1	X											
	Lift Bail (For use w/Std Duty Bench Models.)	K2331-1	1	X											
	Swivel Kit (For use w/Std Duty Bench Models.)	K2332-1	1	X											
	Co-Axial Power Cable	K1796-[]	1	X											
	Work and Feeder Cables Package	K1803-1	1	X											
	Weld Power Cable, Twist-Mate to Lug	K1840-[]	1	X											
	Weld Power Cable, Twist-Mate to Twist-Mate	K1841-[]	1	X											
	Weld Power Cable, Lug to Lug	K1842-[]	1	X											
	Control Cable	K1797-[]	1	X											
	Adapter for Miller Power Sources	K2335-1	1	X											
	42 Volt Transformer Kit	K1520-1	1	X											
	Adapter Cable (For Control Cable to Terminal Strip Power Sources.)	K1798	1	X											
	Ground Clamp	K910-1	1	X											
	Ground Clamp	K910-2	1	X											
	Gun Receiver Bushing (For guns w/K466-1 Lincoln gun connectors; Innershield & Subarc guns.)	K1500-1	1	X											
	Gun Receiver Bushing (For guns w/K466-2 & -10 Lincoln gun connectors; Magnum 200/300/400 guns & compatible with Tweco® #4.)	K1500-2	1	X											
	Gun Receiver Bushing (For guns w/K613-7 Lincoln gun connectors; Magnum 550 guns & compatible with Tweco® #5.)	K1500-3	1	X											
	Gun Receiver Bushing (For guns w/K466-3 Lincoln gun connectors; compatible with Miller® guns.)	K1500-4	1	X											
	Gun Receiver Bushing (Compatible with Oxo® guns.)	K1500-5	1	X											
	Gun Receiver Bushing (For Lincoln Fast-Mate guns.)	K489-7	1	X											
	Magnum 200/300/400 to K1500-2 Adapter	K466-2	1	X											
	Magnum 550 to K1500-3 Adapter	K613-7	1	X											
	Incoming Bushing For Lincoln Conduit .025-1/16" (0.6 - 1.6mm) wire.	K1546-1	1	X											
	Incoming Bushing For Lincoln Conduit 1/16-1/8" (1.6 - 3.2mm) wire.	K1546-2	1	X											
	Spindle Adapter - For mounting 14 lb. (6.4kg) Innershield Coils on 2 in (51mm) spindles.	K435	1	X											
	Spindle Adapter - For mounting 8 in (203mm) diameter spools on 2 in (51mm) spindles.	K468	1	X											
	Readi-Reel Adapter - For mounting 23-30 lb. (10.4-13.6 kg) reels to 2 in (51mm) spindles.	K363P	1	X											
	Readi-Reel Adapter - For mounting 50-60 lb. (22.7-27.2 kg) reels to 2 in (51mm) spindles. (For use with Heavy Duty Bench models.)	K438	1	X											
	Coil Adapter - For mounting 50-60 lb. (22.7-27.2 kg) coils to 2 in (51mm) spindles. (For use with Heavy Duty Bench models.)	K1504-1	1	X											

Note: When ordering Cable, the dash number is the length of cable ordered.

Index of Sub Assemblies

OPTIONAL EQUIPMENT LISTING

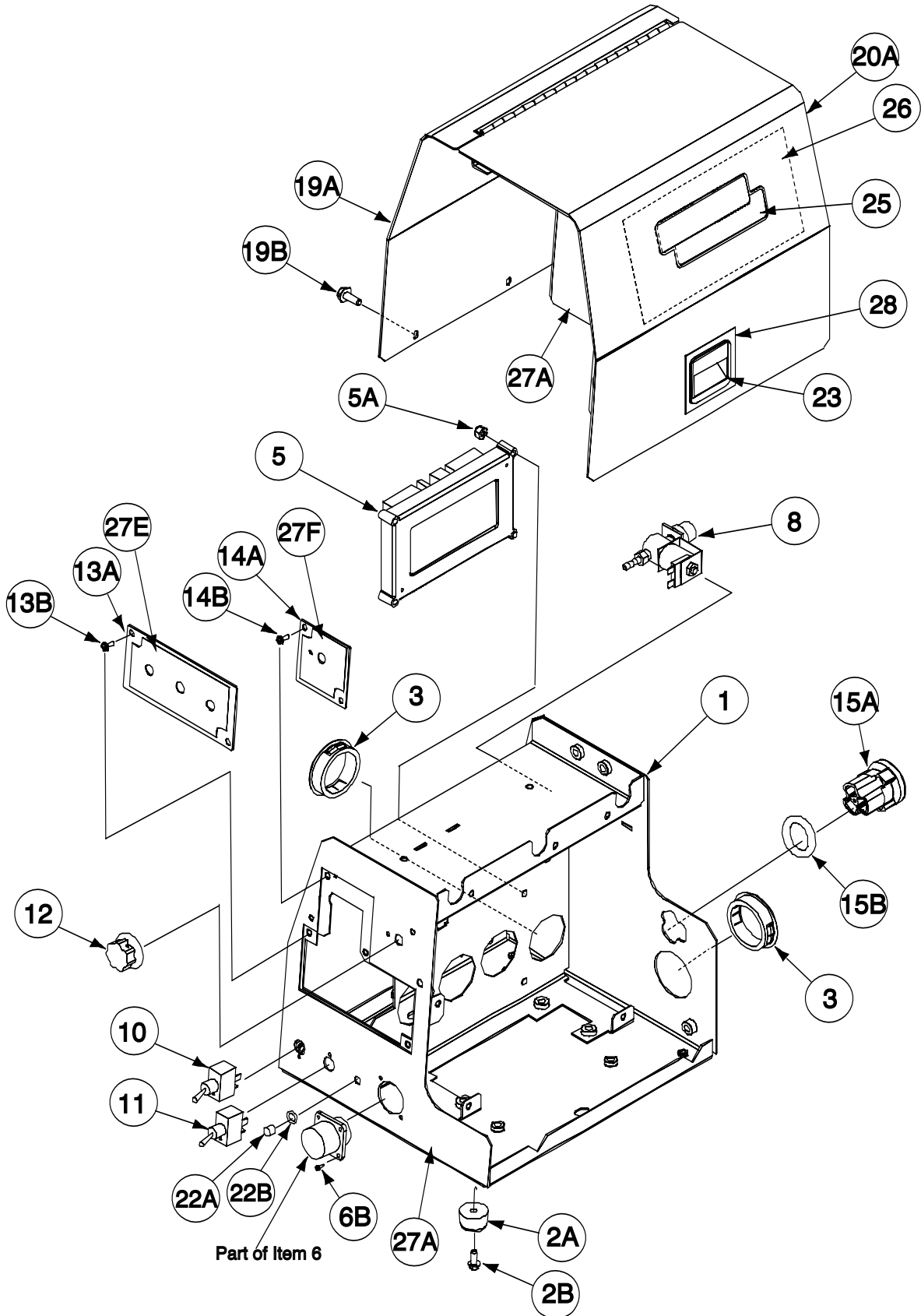
Miscellaneous Options Available for your machine are listed below:

Indicates a change this printing.

ITEM	DESCRIPTION	PART NO.	QTY.	# Indicates a change this printing.																
				1	2	3	4	5	6	7	8	9	10	11	12					
	Plastic Wire Cover-For 30-44 lb (13.6-20.0kg) Wire Packages. (For use with Standard Duty Bench models and Heavy Duty Bench models.)	K1634-1	1	X																
	Plastic Wire Cover - For up to 60 lb (27.2kg) Wire Packages. (For use with Heavy Duty Bench Models.)	K1634-2	1	X																
	Gas Guard Regulator	K659-1	1	X																
	Adjustable Gas Regulator	3000290	1	X																
	Deluxe Adjustable Gas Regulator	K586-1	1	X																
	Heavy Duty Universal Wire Reel Stand For Spools up to 60 lb. (27.2 kg)	K1524-3	1	X																
	4 Wheeled Wire Feeder Undercarriage (For use with Standard Duty Bench Models and Heavy Duty Bench Models.)	K163	1	X																
	Swivel Platform (For use with Heavy Duty Bench Models.)	K1557-1	1	X																
	Light Duty Caster Kit (For use with Heavy Duty Bench Models.)	K1556-1	1	X																
	Insulated Lift Bail (For use with Heavy Duty Bench Models.)	K1555-1	1	X																
	Drive Roll Kits, Steel Wires (Includes: 4 Smooth V groove drive rolls & inner wire guide.)																			
	.023-.030 (0.6-0.8mm)	KP1505-030S	1	X																
	.035 (0.9mm)	KP1505-035S	1	X																
	.045 (1.2mm)	KP1505-045S	1	X																
	.052 (1.4mm)	KP1505-052S	1	X																
	1/16 (1.6mm)	KP1696-1/16S	1	X																
	Drive Roll Kits, Cored Wires (Includes: 4 Knurled drive rolls & inner wire guide.)																			
	.030-.035 (0.8-0.9mm)	KP1505-035C	1	X																
	.040-.045 (1.0-1.2mm)	KP1505-045C	1	X																
	.052 (1.4mm)	KP1505-052C	1	X																
	1/16 (1.6mm)	KP1505-1/16C	1	X																
	Drive Roll Kits, Steel or Cored Wires (Includes: 4 Knurled drive rolls, & inner wire guide.)																			
	.068-.072 (1.8mm)	KP1505-068	1	X																
	5/64 (2.0mm)	KP1505-5/64	1	X																
	3/32 (2.4mm)	KP1505-3/32	1	X																
	Drive Roll Kits, Aluminum Wire (Includes: 4 polished U groove drive rolls, outer wire guide & inner wire guide.)																			
	.035 (0.9mm)	KP1507-035A	1	X																
	.040 (1.0mm)	KP1507-040A	1	X																
	3/64 (1.2mm)	KP1507-3/64A	1	X																
	1/16 (1.6mm)	KP1507-1/16A	1	X																

Index of Sub Assemblies

Center Panel & Case Shell Assembly



LF-74



Indicates a change this printing.

Use only the parts marked "x" in the column under the heading number called for in the model index page.

ITEM	DESCRIPTION	PART NO.	QTY.	1	2	3	4	5	6	7	8	9
1	Center Panel & Case Shell Assembly	L12100-1	1	X	X							
2A	Bumper	T14882-4	4	X	X							
2B	#10-24x.50 HHCS	CF000371	4	X	X							
3	Bushing	T12380-1	2	X	X							
4	Bushing (Not Shown)	T12380-3	1	X	X							
5	Common Analog P.C. Board	S26028-[]	1	X	X							
5A	#10-24 HLN	T9187-13	4	X	X							
6A	Harness (Not Shown)	G4910	1	X	X							
6B	Self Tapping Screws	S8025-96	6	X	X							
7	Diode - Bridge (Not Shown)	T13637-1	1	X	X							
7A	#10-24 HLN (Not Shown)	T9187-13	1	X	X							
8	Solenoid Valve Assembly	M17294-8	1	X	X							#
8A	Plain Washer (Not Shown)	S9262-149	1	X	X							#
8B	Conduit Locknut (Not Shown)	T14370-1	1	X	X							#
9A	Flex Tube (Not Shown)	T10642-267	1	X	X							
9B	Hose Clamp (Not Shown)	T13777-8	2	X	X							
10	Toggle Switch	T10800-38	1	X	X							
11	Toggle Switch	T10800-49	1	X	X							
12	Potentiometer Knob	T10491	1	X	X							
13A	Timer Kit Panel	S25706	1	X	X							
13B	#10-24x.50 HHCS	CF000371	2	X	X							
14A	Remote Kit Panel	S25707	1	X	X							
14B	#10-24x.50 HHCS	CF000371	2	X	X							
15A	Ball Bushing Assembly	M18947-1	1	X	X							
15B	"O" Ring	T13483-37	1	X	X							
19A	Wraparound	L12095	1	X	X							
19B	#10-24x.50 HHCS	CF000371	5	X	X							
20A	Door & Hinge Assembly	L12097	1	X	X							
20B	#10-24x.50 HHCS (Not Shown)	CF000371	3	X	X							
22A	LED, Lens for Panel Mount	S23093-1	1	X	X							
22B	Retaining "O" Ring	S23094-1	1	X	X							
23	Door Latch	S21033-1	1	X	X							
24A	5/16x.75 HHCS (Not Shown)	CF000040	4	X	X							
24B	Lock Washer (Not Shown)	E106A-3	4	X	X							
24C	Plain Washer (Not Shown)	S9262-121	4	X	X							
25	Decal, Logo	S11893-2	2	X	X							
26	Decal, Door	M20411-1	1	X	X							
	Items 27A thru 27H (L12399-1 thru -8 are all Part of L12399)	NSS	1	X	•							
	Items 27A thru 27H (L12595-1 thru -8 are all Part of L12595)	NSS	1	•	X							
27A	Nameplate (L12399-1)	L12399	1	X	•							
27A	Nameplate (L12595-1)	L12595	1	•	X							
27B	Decal, Door (L12399-2) (Not Shown)	L12399	1	X	•							
27B	Decal, Door (L12595-2) (Not Shown)	L12595	1	•	X							
27C	Decal, Tighten/Loosen (L12399-3) (Not Shown)	L12399	1	X	•							
27C	Decal, Tighten/Loosen (L12595-3) (Not Shown)	L12595	1	•	X							
27D	Decal, Gas Inlet (L12399-4) (Not Shown)	L12399	1	X	•							
27D	Decal, Gas Inlet (L12595-4) (Not Shown)	L12595	1	•	X							
27E	Decal, Timer Panel (L12399-5)	L12399	1	X	•							
27E	Decal, Timer Panel (L12595-5)	L12595	1	•	X							

Index of Sub Assemblies
 Sub Assembly Illustration
 Index of Sub Assemblies
 Sub Assembly Illustration
 Index of Sub Assemblies
 Sub Assembly Illustration
 Index of Sub Assemblies
 Sub Assembly Illustration

Indicates a change this printing.

Use only the parts marked "x" in the column under the heading number called for in the model index page.

ITEM	DESCRIPTION	PART NO.	QTY.	1	2	3	4	5	6	7	8	9
27F	Decal, Remote Control (L12399-6)	L12399	1	X	•							
27F	Decal, Remote Control (L12595-6)	L12595	1	•	X							
27G	Decal, (L12399-7) (Not Shown)	L12399	1	X	•							
27G	Decal, (L12595-7) (Not Shown)	L12595	1	•	X							
27H	Decal, Overcurrent Protection (L12399-8) (Not Shown)	L12399	1	X	•							
27H	Decal, Overcurrent Protection (L12595-8) (Not Shown)	L12595	1	•	X							
28	Decal, Door Latch	L12399-9	1	X	X							
32	Warning Decal (Not Shown)	S20601	1	X	X							
33	Warning Decal (Not Shown)	S25536	1	X	X							
34	Decal, Pressure Arm (Not Shown)	S25890	1	X	X							
36	Wiring Diagram (Not Shown)	L12484	1	X	X							
37	Warning Decal (Not Shown)	S25815	1	X	X							

Note: When ordering new printed circuit boards indicate the dash number [] of the "Old" board that is to be replaced. This will aid Lincoln in supplying the correct and latest board along with any necessary jumpers or adapters. The dash number brackets [] have purposely been left blank as to eliminate errors, confusion and updates.

Index of Sub Assemblies
 Sub Assembly Illustration
 Index of Sub Assemblies
 Sub Assembly Illustration
 Index of Sub Assemblies
 Sub Assembly Illustration
 Index of Sub Assemblies
 Sub Assembly Illustration

NOTES

Index of Sub Assemblies

Index of Sub Assemblies

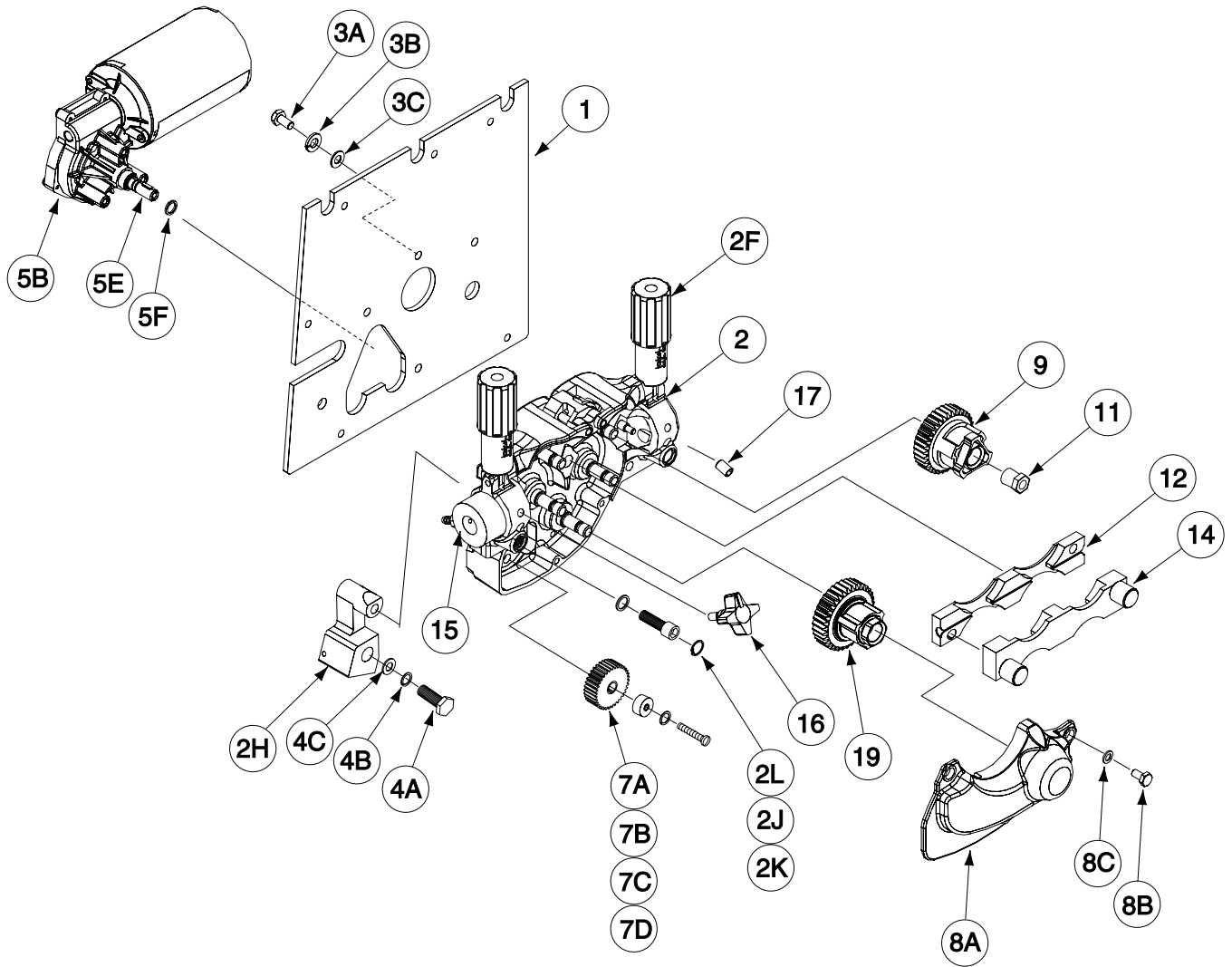
Index of Sub Assemblies

Index of Sub Assemblies

LF-74



Wire Drive Assembly



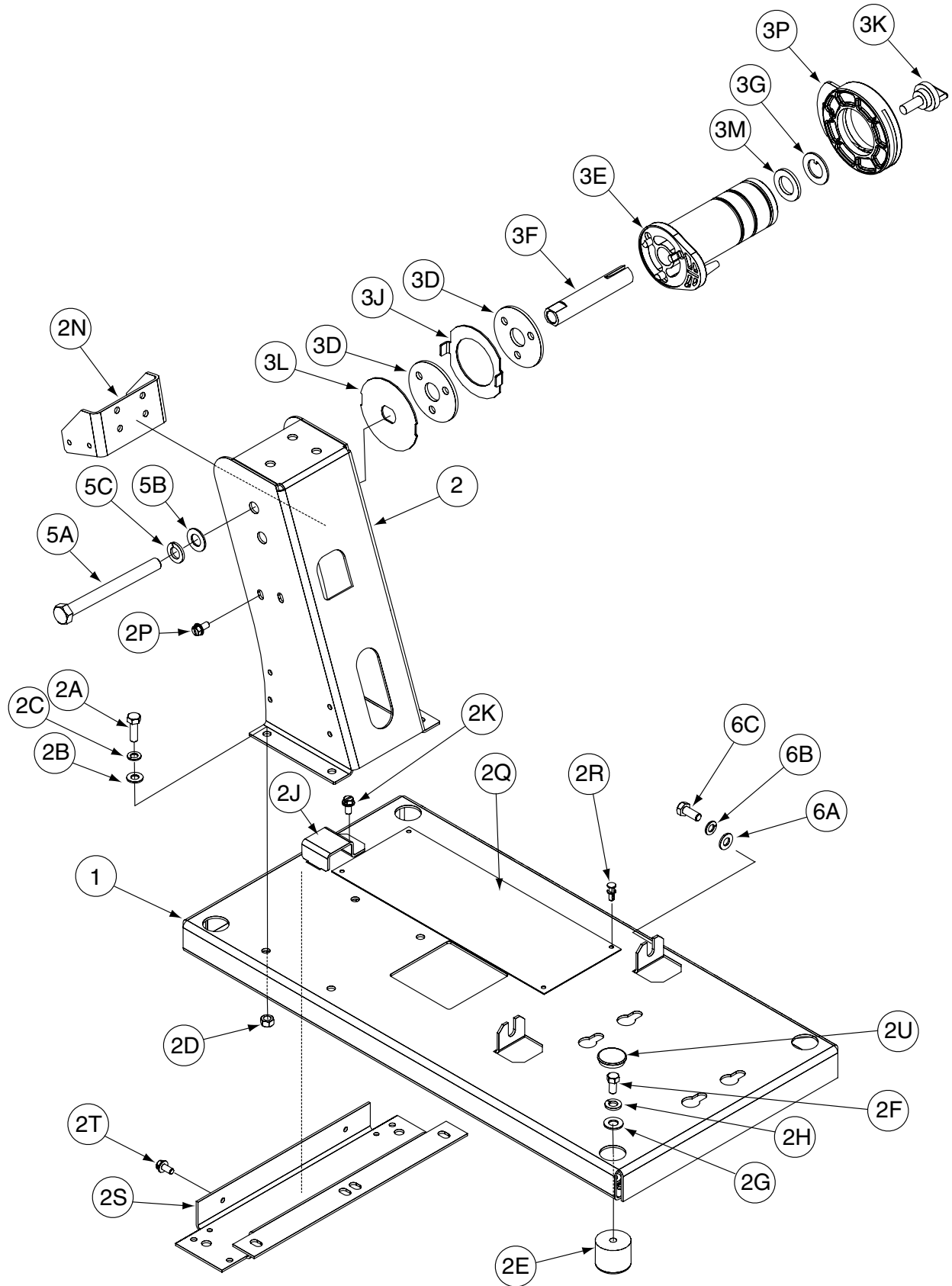
Indicates a change this printing.

Use only the parts marked "x" in the column under the heading number called for in the model index page.

ITEM	DESCRIPTION	PART NO.	QTY.	1	2	3	4	5	6	7	8	9
1	Wire Drive Assembly, Includes:	L12378	1	X	•							
	Wire Drive Assembly, Includes:	L12378-1	1	•	X							
	Gearbox Mounting Panel	L12091-1	1	X	X							
2	Feedplate Assembly, Includes:	G4945	1	X	X							
2A	Idle Arm, Left (Not Shown)	NSS	1	X	X							
2B	Dowel Pin (Not Shown)	NSS	1	X	X							
2C	Idle Arm, Right (Not Shown)	NSS	1	X	X							
2D	Dowel Pin (Not Shown)	NSS	1	X	X							
2F	Adjustment Arm Assembly	M19179-2	2	X	X							
2G	Roll Pin (Not Shown)	NSS	2	X	X							
2H	Connection Bar	M19611-4	1	X	X							
2J	Socket Head Cap Screw	T9447-112	1	X	X							
2K	Plain Washer	S9262-167	1	X	X							
2L	Retaining Ring	S9776-69	1	X	X							
2M	Wire Guide Retaining Pin (Not Shown)	NSS	2	X	X							
2N	Shaft	NSS	5	X	X							
2P	Spring (Not Shown)	T11862-64	1	X	X							
3A	1/4-20 x .50 HHCS	CF000012	4	X	X							
3B	Lock Washer	E106A-2	4	X	X							
3C	Plain Washer	S9262-23	4	X	X							
4A	1/2-13x1.00 HHCS	CF000021	1	X	X							
4B	Lock Washer	E106A-15	1	X	X							
4C	Plain Washer	S9262-1	1	X	X							
5A	Motor Gearbox Assembly, Includes:	L12081	1	X	X							
5B	Drive Motor	NSS	1	X	X							
5C	Connector, Molex (Not Shown)	S24018-8	1	X	X							
5D	Locking Post (Not Shown)	S24019-8	1	X	X							
5E	Woodruff Key	S24170-1	1	X	X							
5F	Snap Ring	S9776-27	1	X	X							
6A	Lock Washer (Not Shown)	E106A-2	3	X	X							
6B	M6 x 1.00 Phillips Pan Head Screw (Not Shown)	T14731-18	3	X	X							
7A	Drive Gear	M19870	1	X	•							
7A	Drive Gear	M18967-1	1	•	X							
7B	Collar	S25414	1	X	X							
7C	Lock Washer	T4291-A	1	X	X							
7D	Metric Screw	T14731-47	1	X	X							
8A	Cover	M20399-1	1	X	X							
8B	1/4-20 x .50 HHCS	CF000012	3	X	X							
8C	Lock Washer	E106A-2	3	X	X							
9	Drive Roll Shaft Assembly	S25638	4	X	X							
11	Retainer	S25403	5	X	X							
12	Wire Guide, Inner	M18103-1	1	X	X							
13	Drive Roll (Not Shown)	M20207-5	4	X	X							
14	Wire Guide Assembly (Outer)	S22737	1	X	X							
15	Gun Adapter	S22905-2	1	X	X							
16	Screw Stud	T13858	1	X	X							
17	Set Screw	S11604-21	1	X	X							
18	Ball Housing (Not Shown)	M18946	1	X	X							
19	Drive Hub Bearing Assembly	S25405	1	X	X							

Index of Sub Assemblies
 Sub Assembly Illustration
 Index of Sub Assemblies
 Sub Assembly Illustration
 Index of Sub Assemblies
 Sub Assembly Illustration
 Index of Sub Assemblies
 Sub Assembly Illustration

K1524-3 Wire Reel Stand & Base Assembly



Indicates a change this printing.

Use only the parts marked "x" in the column under the heading number called for in the model index page.

ITEM	DESCRIPTION	PART NO.	QTY.	1	2	3	4	5	6	7	8	9
	Reel Stand & Base Assembly, Includes:	L10229-3	1	X								
1	Base	M18320-2	1	X								
2	Mast Welded Assembly	M18745	1	X								
2A	5/16-18x1.00 HHCS	CF000062	4	X								
2B	Plain Washer	S9262-121	4	X								
2C	Lock Washer	E106A-14	4	X								
2D	5/16-18 HN	CF000029	4	X								
2E	Rubber Isolator	S20979	4	X								
2F	3/8-16x.75 HHCS	CF000034	4	X								
2G	PLain Washer	S9262-120	4	X								
2H	Lock Washer	E106A-16	4	X								
2J	Cable Clamp	S22523	1	X								
2K	Thread Forming Screw	S9225-68	1	X								
2N	Support Bracket	S22957	1	X								
2P	Thread Forming Screw	S9225-68	4	X								
2Q	Insulation	S23721	1	X								
2R	Push Rivets	T13588-1	4	X								
2S	Support Bracket	M18746-1	1	X								
2T	Thread Forming Screw	S9225-68	2	X								
2U	Plug Button	T10397-23	4	X								
	Spindle Assembly, Includes:	M14935-2	1	X								
3D	Friction Washer	S17435-4	2	X								
3E	Spindle	L10560	1	X								
3F	Spindle Shaft	S22975	1	X								
3G	Keyed Washer	T12965-2	1	X								
3H	Compression Spring (Not Shown)	T11862-14	1	X								
3J	Brake Plate Lock	S23968	1	X								
3K	Thumb Screw	T14813-B	1	X								
3L	Brake Plate	S23972	1	X								
3M	Friction Washer	S17435-3	1	X								
3N	1/2-13 x .625 HHCS (Not Shown)	CF000169	1	X								
3P	Retaining Collar Assembly	S23811	1	X								
5A	1/2-13 x 5.25 HHCS	T8833-59	1	X								
5B	Plain Washer	S9262-1	1	X								
5C	Lock Washer	E106A-15	1	X								
	Items 6A, 6B & 6C Mount Control Box to Base											
6A	Plain Washer	S9262-121	2	X								
6B	Lock Washer	E106A-3	2	X								
6C	5/16-.75 HHCS	CF000040	2	X								

Index of Sub Assemblies
 Sub Assembly Illustration
 Index of Sub Assemblies
 Sub Assembly Illustration
 Index of Sub Assemblies
 Sub Assembly Illustration
 Index of Sub Assemblies
 Sub Assembly Illustration

NOTES

Index of Sub Assemblies

Index of Sub Assemblies

Index of Sub Assemblies

Index of Sub Assemblies

LF-74

