

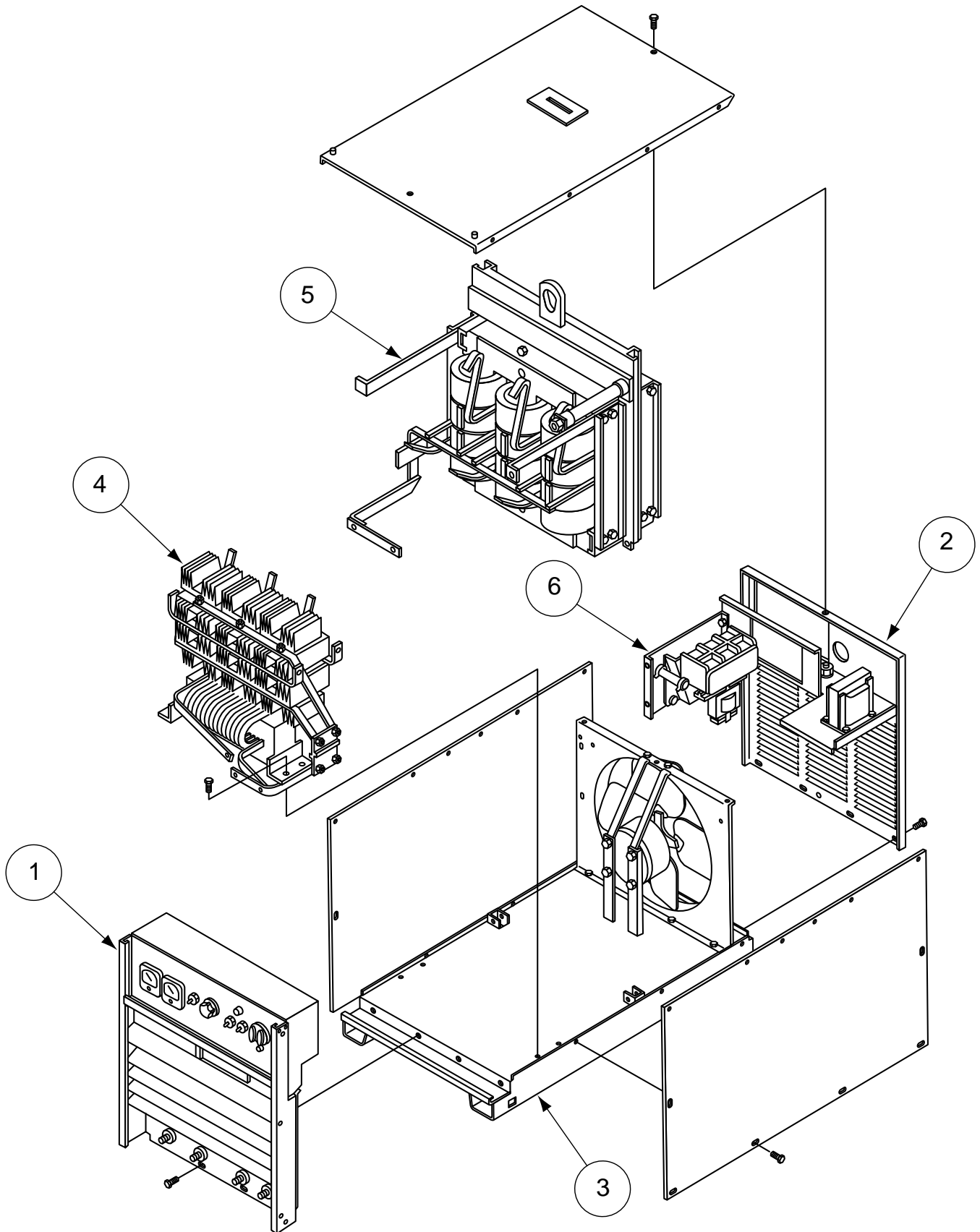
PARTS LIST FOR

DC-1000

DC-1000



ILLUSTRATION OF SUB-ASSEMBLIES



DC-1000

For Codes: 8631 to 10293

Do Not use this Parts List for a machine if its code number is not listed. Contact the Service Department for any code numbers not listed.

Use the Illustration of Sub-Assemblies page and the table below to determine which sub assembly page and column the desired part is located on for your particular code machine.

Sub Assembly Item No. →			1	2	3	4	5	6	
SUB ASSEMBLY PAGE NAME →	Optional Equipment	Miscellaneous Items	Case Front & Control Box	Case Back Assembly	Base, Fan, Roof and Case Sides	Output Rectifier & Choke Assembly	Lift Bale & Transformer Assembly	S78 Contactor	
PAGE NO. →	P146-B.1	P146-B.2	P146-C	P146-D	P146-E	P146-F	P146-G	P28-J	
CODE NO. ↓									
8631		1	1	1	1	1	1	34	
8632		1	1	1	1	1	1	34	
8640		1	1	1	1	1	1	34	
8641		1	1	1	1	1	1	34	
8642		1	1	1	1	1	1	34	
8644		1	1	1	1	1	1	34	
8656		1	1	1	1	1	1	34	
8687		1	1	1	1	1	1	34	
8721		1	1	1	1	1	1	34	
8795		1	1	1	1	1	1	34	
8796		1	1	1	1	1	1	34	
8797		1	1	1	1	1	1	34	
8812		1	1	1	1	1	1	34	
8905		1	1	1	1	1	1	34	
8961		1	1	1	1	1	1	34	
8964		1	1	1	1	1	1	34	
8981		1	1	1	1	1	1	34	
9098		1	1	1	1	1	1	34	
9099		1	1	1	1	1	1	34	
9151		1	1	1	1	1	1	34	
9337		1	1	1	1	1	1	34	
9475		1	1	1	1	1	1	34	
9572		1	1	1	1	1	1	34	
9573		1	1	1	1	1	1	34	
9574		1	1	1	1	1	1	34	
9575		1	1	1	1	1	1	34	
9609		1	1	1	1	1	1	34	
9622		1	1	1	1	1	1	34	
9623		1	1	1	1	1	1	34	

DC-1000

For Codes: 8631 to 10293

Do Not use this Parts List for a machine if its code number is not listed. Contact the Service Department for any code numbers not listed.

Use the Illustration of Sub-Assemblies page and the table below to determine which sub assembly page and column the desired part is located on for your particular code machine.

Sub Assembly Item No. →									
	Optional Equipment	Miscellaneous Items	1 Case Front & Control Box	2 Case Back Assembly	3 Base, Fan, Roof and Case Sides	4 Output Rectifier & Choke Assembly	5 Lift Bale & Transformer Assembly	6 S78 Contactor	
SUB ASSEMBLY PAGE NAME →									
PAGE NO. →	P146-B.1	P146-B.2	P146-C	P146-D	P146-E	P146-F	P146-G	P28-J	
CODE NO. ↓									
9919		1	2	1	1	1	1	34	
9920		1	2	1	1	1	1	34	
9921		1	2	1	1	1	1	34	
9922		1	2	1	1	1	1	34	
9923		1	2	1	1	1	1	34	
9924		1	2	1	1	1	1	34	
9925		1	2	1	1	1	1	34	
10293		1	2	1	1	1	1	34	

NOTES

DC-1000



OPTIONAL EQUIPMENT LISTING

Miscellaneous Options Available for your machine are listed below:

Indicates a change this printing.

DESCRIPTION	PART NUMBER
Paralleling KitOrder S20428
Remote Output KitOrder K775

MISCELLANEOUS ITEMS
 (THESE ITEMS ARE NOT ILLUSTRATED)

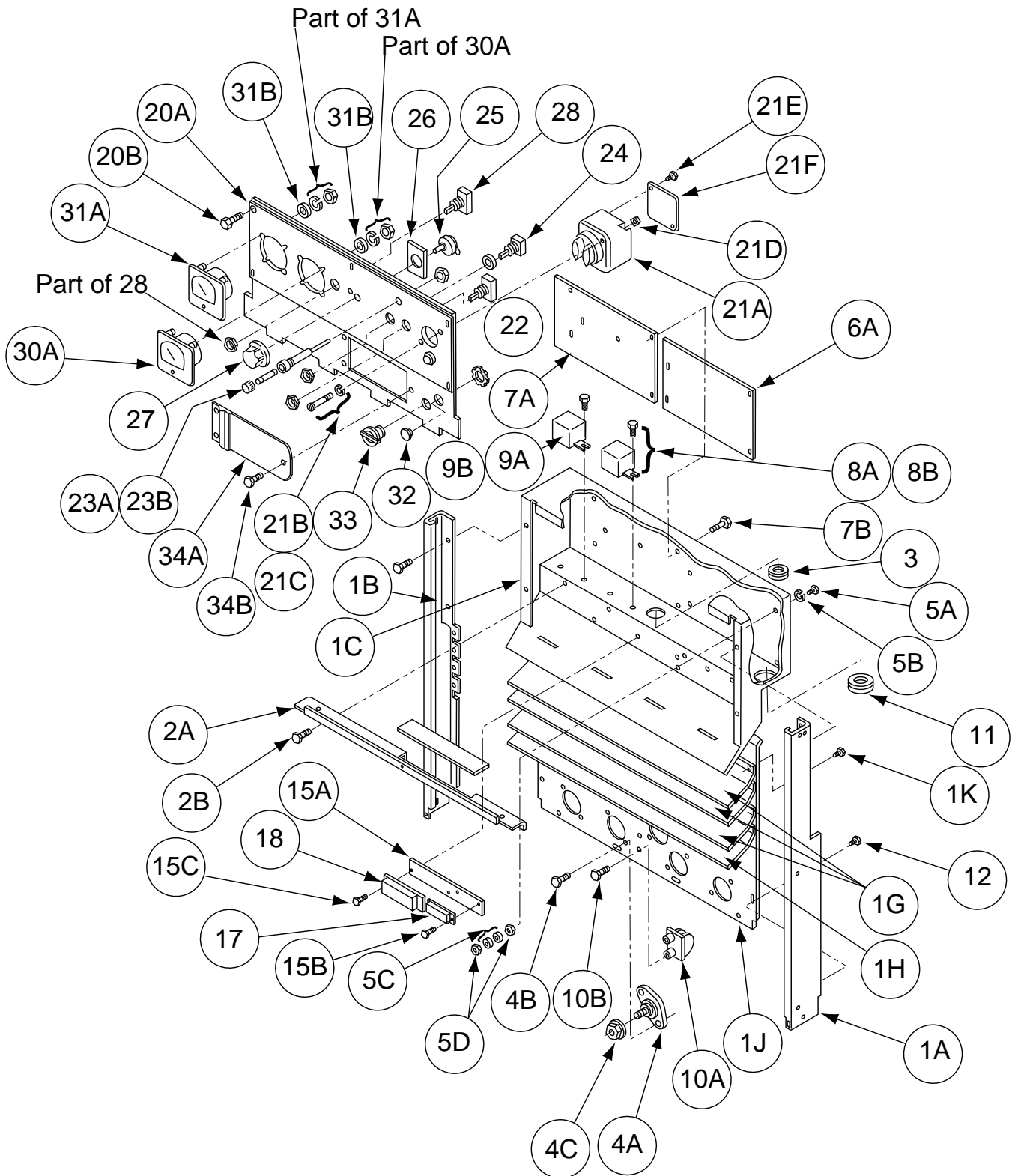
Indicates a change this printing.

Use only the parts marked "x" in the column under the heading number called for in the model index page.

* Recommended Spare Part

DESCRIPTION	PART NO.	QTY.	1	2	3	4	5	6	7	8	9
Caution Decal	S13504	1	X								
Grounding Decal	T13259	1	X								
Warning Decal	T13086-20	1	X								
Instruction Decal	T14751	1	X								
Earth Ground Connection Decal	T13260-4	1	X								

Case Front & Control Box Assembly



Indicates a change this printing.

Use only the parts marked "x" in the column under the heading number called for in the model index page.

* Recommended Spare Part

ITEM	DESCRIPTION	PART NO.	QTY.	1	2	3	4	5	6	7	8	9
1	Front Support & Control Box Assembly, Includes:	L7521-2	1	•	X							
1A	Case Front Support	L7517-1	1	•	X							
1B	Case Front Support	L7517-2	1	•	X							
1C	Control Box	L9006	1	•	X							
1E	Self Tapping Screw (Not Shown)	S8025-65	2	•	X							
1G	Louver	M15391-2	3	•	X							
1H	Louver	M15391-2	1	•	X							
1J	Output Panel	L9005	1	•	X							
1K	Self tapping screw	S8025-65	12	•	X							
1	Front Support & Baffle Assembly, Includes:	L6496	1	X	•							
1A	Case Front Support	L6594-1	1	X	•							
1B	Case Front Support	L6594-21	1	X	•							
1G	Louver	M13971-2	4	X	•							
1K	Self Tapping Screw	S8025-65	8	X	•							
2A	Control Box Partition	M14301	1	X	X							
2B	Self Tapping Screw	S8025-65	3	X	X							
3	Bushing	T14614-1	1	X	•							
3	Bushing	T14614-2	1	•	X							
4A	Output Terminal Assembly	S16656-4	5	•	X							
4A	Output Terminal Assembly	S16656-2	5	X	•							
4B	Thread Forming Screw	S9225-36	8	X	X							
4C	Output Stud Nut	T3960	4	X	X							
5A	Thread Forming Screw	S9225-36	1	X	X							
5B	Lock Washer	T9695-1	1	X	X							
5C	Plain Washer	S9262-27	2	X	X							
5D	#10-24 Hex Nut	CF000010	2	X	X							
6A	Control P.C. Board	G1585	1	X	•							
6A	Control P.C. Board	G1585-2	1	•	X							
6B	P.C. Board Support (Not Shown)	S19300-3	5	X	X							
7A	Firing Circuit P.C. Board	G1486-4	1	X	•							
7A	Firing Circuit P.C. Board	G1486-5	1	•	X							
7B	P.C. Board Support	S19300-3	6	X	X							
8A	Relay	S14293-8	1	X	X							
8B	Self Tapping Screw	S8025-62	2	X	X							
8C	I.D. Sticker (Not Shown)	T12286-4	1	X	X							
9A	Relay	S14293-12	1	X	X							
9B	Self Tapping Screw	S8025-62	1	X	X							
9C	I.D. Sticker (Not Shown)	T12286-2	2	X	X							
10A	Output Snubber	M14312	1	X	•							
10A	Output Snubber	M14312-1	1	•	X							
10B	Self Tapping Screw	S8025-71	2	X	X							
11	Bushing	T12380-1	1	X	X							
12	Self tapping Screw	S8025-70	2	X	X							
13	Decal (Not shown)	T13260-3	1	X	X							
14	Output Terminal Decal (Not Shown)	S19629	1	X	•							
14	Output Terminal Decal (Not Shown)	S20641	1	•	X							
15A	Number Plate	S17160	1	X	X							
15B	Self Tapping screw	S8025-15	2	X	X							
15C	Self Tapping Screw	S8025-62	2	X	X							
16	Terminal Strip Gasket (Not Shown)	T14689	1	X	X							
17	Terminal Strip (6 Terminals)	S8542-7	1	X	X							

#

Indicates a change this printing.

Use only the parts marked "x" in the column under the heading number called for in the model index page.

* Recommended Spare Part

ITEM	DESCRIPTION	PART NO.	QTY.	1	2	3	4	5	6	7	8	9
18	Terminal Strip (5 Terminals)	S14530-11	1	X	X							
19	Control Box Cover (Not Shown)	L9000	1	•	X							
19	Control Box Cover (Not Shown)	L6601	1	X	•							
20A	Nameplate (without meters)	L5961	1	X	•							
20A	Nameplate (without meters)	L8237	1	•	X							
20A	Nameplate (with meters)	L5961-1 Ø	1	X	•							
20A	Nameplate (with meters)	L8237-1	1	•	X							
20B	Self Tapping Screw	S8025-65	9	X	X							
21A	Push Button Assembly	M6574-A	1	X	X							
21B	#10-24 x 2.00 Round Head Screw	CF000104	2	X	X							
21C	Lock Washer	E106A-1	2	X	X							
21D	#10-24 Square Nut	CF000154	2	X	X							
21E	Phillips Round Head Screw	CF000108	5	X	X							
21F	Bottom Cover	T8660	1	X	X							
22	Output Control Switch	T10800-24	1	•	X							
22	Output Control Switch	T11160	1	X	•							
23A	Fuse Holder	S10433-1	1	X	X							
23B	Fuse	T10728-16	1	X	X							
24	Welding Mode Switch (SW4)	T13381-4	1	X	X							
25	Output Control Potentiometer (R1)	T10812-40	1	X	X							
26	Potentiometer Insulation	T12792-1	1	X	X							
27	Knob	T10491	1	X	X							
28	Control Circuit Polarity Switch	T13562	1	X	•							
28	Control Circuit Polarity Switch	T10800-35	1	•	X							
29	Pilot Light	T13486	1	X	X							
30A	D.c. Ammeter (Optional)	M10485-13	1	X	X							
30B	Plain Washer (Not Shown)	S9262-39	4	X	X							
31A	D.C. Voltmeter (Optional)	M10486-3	1	X	X							
31B	Plain Washer	S9262-39	4	X	X							
32	Plug Button	T13597-1	1	X	X							
32	Box Connector (Earlier Machines)	T9639-2	1	X	•							
33	Box Connector	T9639-1	1	X	X							
34A	Access Door	S17293	1	X	X							
34B	Self Tapping screw	S8025-65	3	X	X							

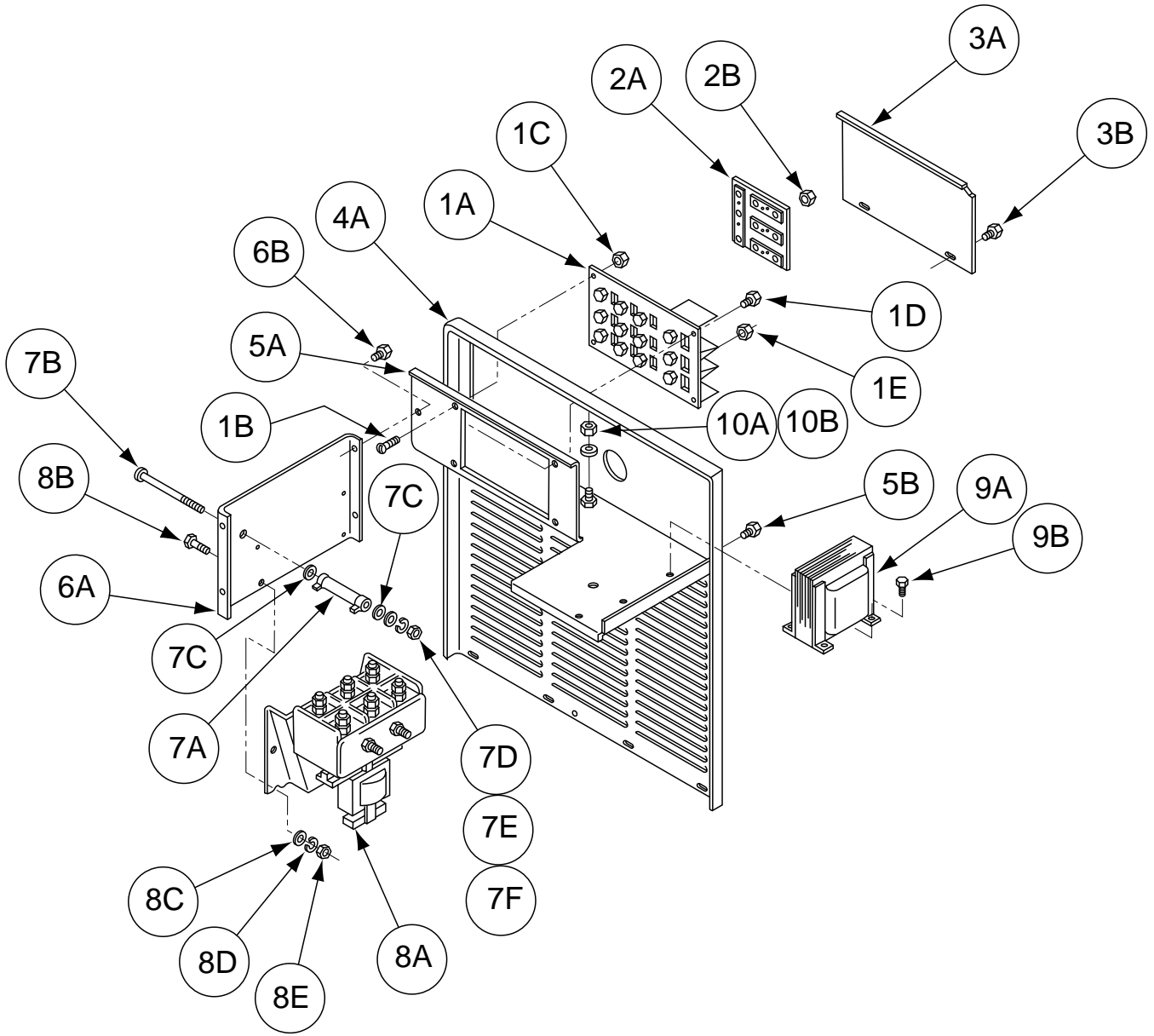
#

NOTES

DC-1000



Case Back Assembly



Indicates a change this printing.

Use only the parts marked "x" in the column under the heading number called for in the model index page.

* Recommended Spare Part

ITEM	DESCRIPTION	PART NO.	QTY.	1	2	3	4	5	6	7	8	9
1A	Stationary Reconnect Panel, Single and Dual Except 380/500 and 460/575	M13544	1	X								
1A	Stationary Reconnect Panel, 380 and 220/380/440	M14354	1	X								
1B	Self Tapping Screw	S8025-70	3	X								
1C	Set Screw	T10082-3	1	X								
1D	Hex Nut	#10-24	1	X								
1E	Hex Jam Nut	T10940-4	3	X								
2A	Moveable Reconnect Panel, Single and Dual Except 380/500 and 460/575 Only	S16215	1	X								
2A	Moveable Reconnect Panel, 380/500 Volt Panel Link, 380 and 220/380/400 Only	S17348	1	X								
	Primary Connection Lead	T14190	9	X								
	Thread Forming Screw	T14723	4	X								
	Plain Washer	S9225-17	13	X								
	Lock Washer	S9225-23	22	X								
	Hex Head Cap Screw	E106A-2	13	X								
	Hex Nut	1/4-20 x .50	4	X								
		1/4-20	4	X								
2B	Hex Nut	3/8-16	9	X								
3A	Access Door	M13448	1	X								
3B	Self Tapping Screw	S8025-65	2	X								
4A	Rear Panel (Gray) (Below Code 9900)	S16223	1	X								
4A	Rear Panel (Red) (Above Code 9900)	S16223-1	1	X								
4B	Self Tapping Screw	S8025-65	8	X								
5A	Input Box	S17159	1	X								
5B	Self Tapping Screw	S8025-65	3	X								
6A	Contactor Mounting Panel	M13589	1	X								
6B	Thread Forming Screw	S9225-8	4	X								
7A	Resistor	S10404-83	1	X								
7B	Round Head Screw	#10-24 x 5.00	1	X								
7C	Insulating Washer	S10773-7	2	X								
7D	Plain Washer	S9262-27	1	X								
7E	Lock Washer	E106A-1	1	X								
7F	Hex Nut	#10-24	1	X								
8A	S-78 Contactor (Less Nvr Coil)	L6200-36A	1	X								
	L6200-36 Contactor Parts	See P28-J	1	X								
	NVR Coil	S-1-9	1	X								
8B	Hex Head Screw	1/4-20 x .625	4	X								
8C	Plain Washer	S9262-98	2	X								
8D	Lock Washer	E106A-2	4	X								
8E	Hex Nut	1/4-20	4	X								
9A	Control Transformer (Codes 8631, 8632, 8641, 8687, 8795, 8961, 8964, 9099, 9572, 9919)	M12390-21	1	X								
9A	Control Transformer (Codes 8640, 8642, 8796, 9098, 9337, 9574, 9622, 9921, 9924)	S17228	1	X								
9A	Control Transformer (Codes 8644, 8797, 9609, 9623, 9923, 9925)	S17286	1	X								
9A	Control Transformer (Codes 8656, 8981, 9475, 9573, 9920)	S17292	1	X								

Indicates a change this printing.

Use only the parts marked "x" in the column under the heading number called for in the model index page.

* Recommended Spare Part

ITEM	DESCRIPTION	PART NO.	QTY.	1	2	3	4	5	6	7	8	9
9A	Control Transformer (Codes 8721, 8905, 9575, 9922, 10293)	S17343	1	X								
9A	Control Transformer (Codes 8812, 9151)	S17535 \emptyset	1	X								
9B	Self Tapping Screw	S8025-65	4	X								
10A	Plain Washer	S9262-121	2	X								
10B	Hex Nut	5/16-18	1	X								

#

\emptyset This part is obsolete and no longer available.

DC-1000

6-22-2000

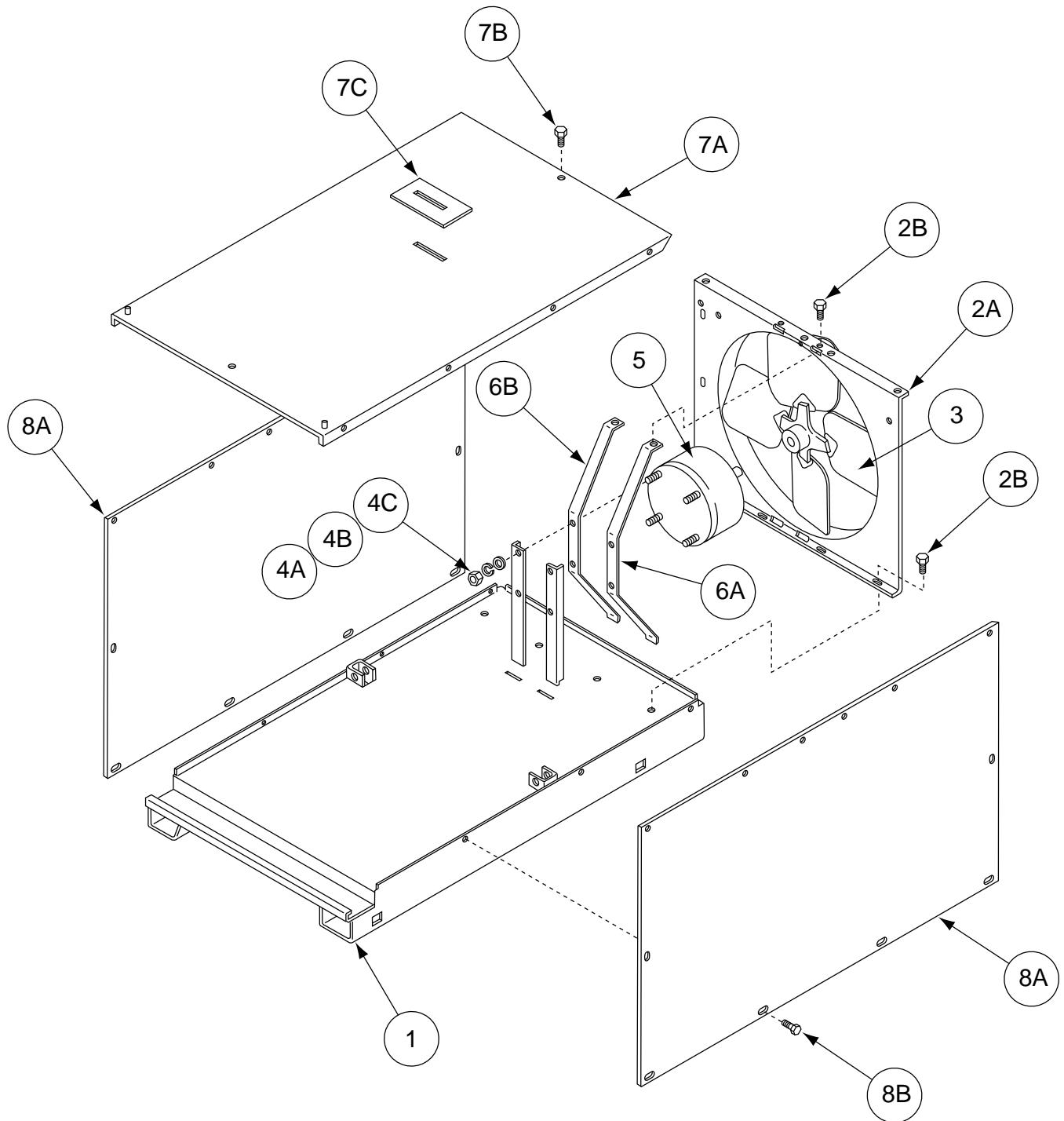


NOTES

DC-1000



Base, Fan, Roof and Case Sides



Indicates a change this printing.

Use only the parts marked "x" in the column under the heading number called for in the model index page.

* Recommended Spare Part

ITEM	DESCRIPTION	PART NO.	QTY.	1	2	3	4	5	6	7	8	9
1	Base Welded Assembly (Below Code 9900)	L6598 Ø	1	X								
1	Base Welded Assembly (Above Code 9900)	L6598-1	1	X								
2A	Fan Baffle	L6247	1	X								
2B	Self Tapping Screw	S8025-65	4	X								
3	Fan	M6819-7	1	X								
4A	Hex Nut (#10-32 Hex Nut) or (#8-32 Hex Nut)	CF000011 CF000042	4 4	X X								
4B	Lock Washer	T9695-1	8	X								
4C	Plain Washer	S9262-27	4	X								
5	Fan Motor	M9983-6	1	X								
6A	Fan Motor Mounting Bracket (Below Code 9900) (Not Shown)	M14161	1	X								
6A	Fan Motor Mounting Bracket (Right (Above Code 9900)	L9009-1	1	X								
6B	Fan Motor Mounting Bracket (Left) (Above Code 9900)	L9009-2	1	X								
6C	Fan Motor Stiffener Bracket (Not Shown) (Below Code 9900)	M13458	1	X								
7A*	Roof (Below Code 9900)	M12352-6	1	X								
7A*	Roof (Above Code 9900)	M12352-17	1	X								
7B	Self Tapping Screw	S8025-65	10	X								
7C	Cover Seal	S12934	1	X								
8A*	Case Side (Below Code 9900)	M14065-3	2	X								
8A*	Case Side (Above Code 9900)	M14065-8	2	X								
8B	Self Tapping Screw	S8025-65	12	X								
	* When placing a order, identify by color.											

#

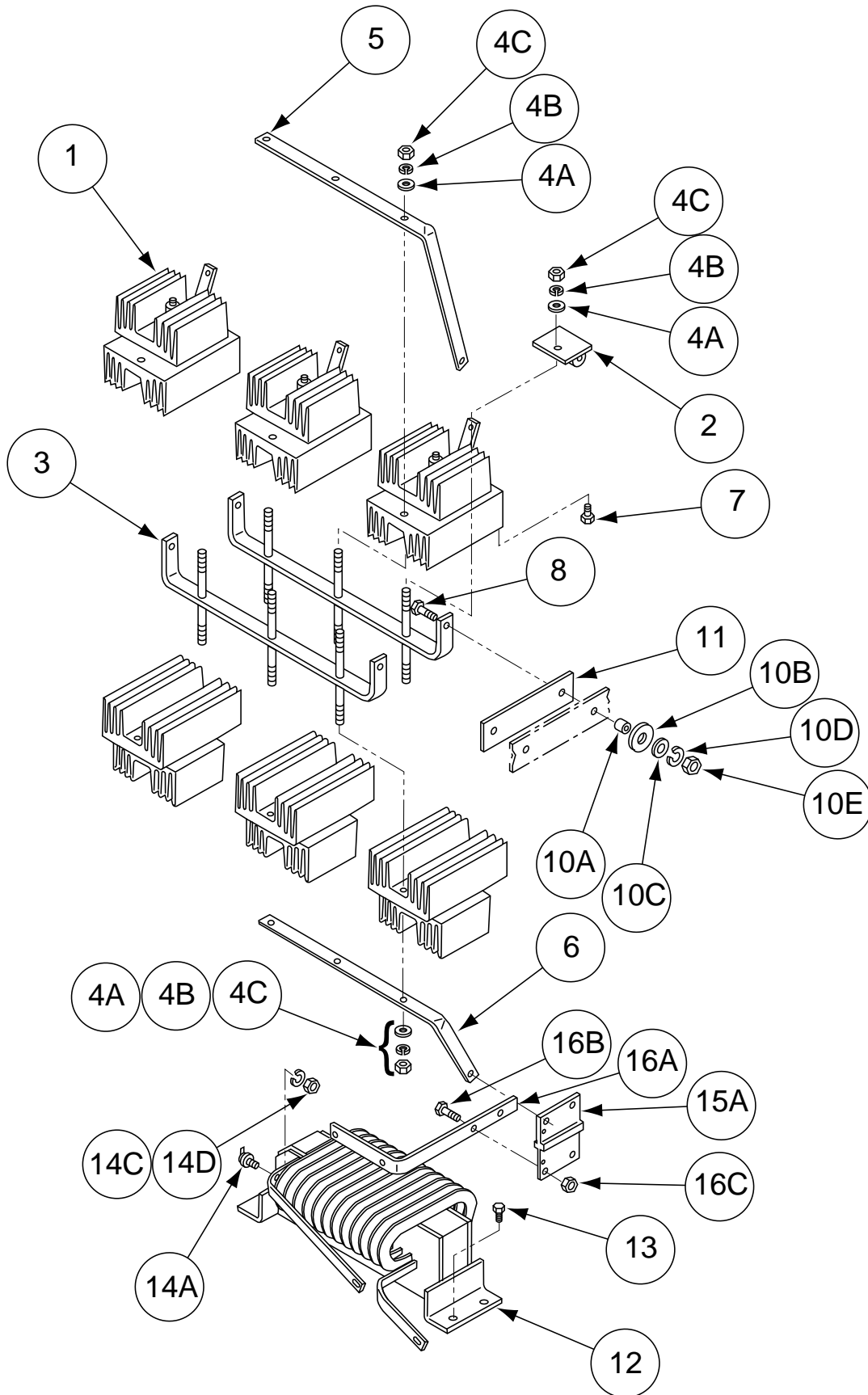
Ø This part is obsolete and no longer available.

DC-1000

12-07-2000



Output Rectifier & Choke Assembly



Indicates a change this printing.

Use only the parts marked "x" in the column under the heading number called for in the model index page.

* Recommended Spare Part

ITEM	DESCRIPTION	PART NO.	QTY.	1	2	3	4	5	6	7	8	9
	Output Rectifier Assembly, Includes: (Above Code 9900)	M16986	1	X								
	Output Rectifier Assembly, Includes: (Between Codes 9500 & 9900)	M16229 Δ	1	X								
	Output Rectifier Assembly, Includes: (Codes Below 9500)	M14605 Δ Ø	1	X								
1	SCR Heat Sink Assembly (Above Code 9900) (May be ordered individually)	M14604-1	6	X								
1	SCR Heat Sink Assembly (Below Code 9500) (May be ordered individually)	M14604	3	X								
1	SCR Heat Sink Assembly (Between Codes 9500 & 9900) (May be ordered individually)	M16228	3	X								
2	Snubber Assembly	S17163	6	X								
3	Heat Sink Mounting Bracket Assembly	S17154	2	X								
4A	Plain Washer	S9262-4	12	X								
4B	Lock Washer	E106A-16	12	X								
4C	3/8-16 Hex Nut	CF000067	12	X								
5	Lead	M14286-3	1	X								
6	Lead	M14286-4	1	X								
7	Self Tapping Screw	S8025-12	7	X								
8	3/8-16 x 1.25 Hex Head Cap Screw	CF000105	4	X								
9	Plug and Lead Assembly (J4) (Not Shown)	S18250-270	1	X								
10A	Insulating Tube	T7028-205	4	X								
10B	Insulating Washer	S10773-19	4	X								
10C	Plain Washer	S9262-4	4	X								
10D	Lock Washer	E106A-16	4	X								
10E	3/8-16 Hex nut	CF000067	4	X								
11	Insulation	T11357-17	2	X								
12	Choke Assembly (Below Code 9900)	L8229	1	X								
12	Choke Assembly (Above Code 9900)	L9007	1	X								
13	Thread Forming Screw	S9225-26	4	X								
14A	Thermostat (Choke)	T13359-8	1	X								
14B	Plain Washer (Not Shown)	S9262-3	1	X								
14C	Lock Washer	E106A-13	1	X								
14D	#6-32 Hex Nut	Cf000005	1	X								
15A	Shunt Assembly	S17152	1	X								
15B	3/8-16 x .625 Hex Head Cap Screw (Not Shown)	CF000018	2	X								
15C	3/8-16 Hex Nut (Not Shown)	CF000315	2	X								
16A	Lead (Shunt to Output Stud)	M16987	1	X								
16B	3/8-16 x .75 Hex Head Cap Screw	CF000034	2	X								
16C	3/8-16 Hex Nut	CF000067	2	X								

#

Ø This part is obsolete and no longer available.

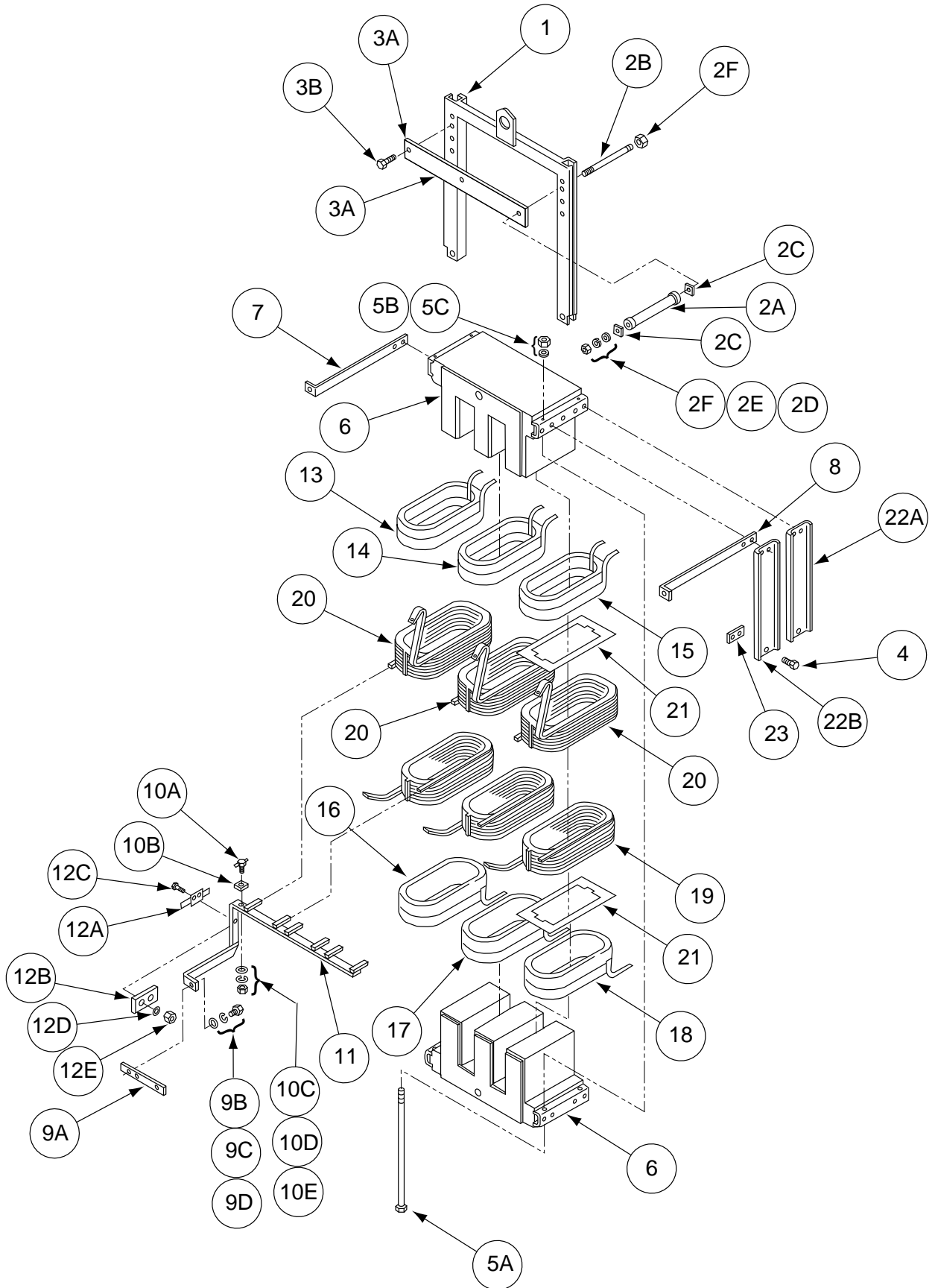
DC-1000

10-09-2000

Δ Contact DPNI (Dealer Parts Network Inc.) 1-800-558-1848



Lift Bale & Transformer Assembly



DC-1000



10-15-96

Indicates a change this printing.

Use only the parts marked "x" in the column under the heading number called for in the model index page.

* Recommended Spare Part

ITEM	DESCRIPTION	PART NO.	QTY.	1	2	3	4	5	6	7	8	9
1	Lift Bale Assembly	L6600	1	X								
2A	Resistor (R2)	S10404-118	1	X								
2B	Mounting Stud	T9781-34	1	X								
2C	Insulating Washer	T9764-6	2	X								
2D	Plain Washer	S9262-98	1	X								
2E	Lock Washer	E106A-2	1	X								
2F	1/4-20 Hex nut	CF000017	2	X								
3A	Lift Bale Baffle	S17301	1	X								
3B	Thread Forming Screw	S9225-26	1	X								
4	Thread Forming Screw	S9225-26	16	X								
5A	Mounting Stud	T9781-45	6	X								
5B	Lock Washer	E106A-5	6	X								
5C	1/2-13 Hex Nut	CF000027	12	X								
6	Lamination Assembly	L6268-6	2	X								
7	Output Rectifier Mounting Bracket	M14292-1	1	X								
8	Output Rectifier Mounting Bracket	M14292-2	1	X								
9A	Output Stud jumper	S20646	1	X								
9B	Plain Washer	S9262-1	1	X								
9C	Lock Washer	E106A-15	1	X								
9D	1/2-13 x .875 Hex Head Cap Screw	CF000344	1	X								
10A	Thermostat (Secondary)	T13359-2	1	X								
10B	Insulation	T14779	1	X								
10C	Plain Washer	S9262-3	1	X								
10D	Lock Washer	E106A-13	1	X								
10E	#6-32 Hex Nut	CF000005	1	X								
11	Negative Output Lead (Above Code 9900)	M16988	1	X								
11	Negative Output Lead (Below Code 9900)	S19618	1	X								
12A	Reed Switch (3CR)	S12334-53	1	X								
12B	Reed Switch Plate	S11797-15	1	X								
12C	#8-32 x .75 Round Head Screw	CF000096	2	X								
12D	Lock Washer	T4291-A	2	X								
12E	#8-32 Hex Nut	CF000042	2	X								
12F	Identification Sticker (Not Shown)	T12286-3	1	X								
12G	Clamp (Not Shown)	T8970-17	2	X								
	(Code 8631) Complete Transformer Assembly 230/460/3/60	L6612-1	1	X								
	Wiring Diagram	L6634	1	X								
	Input Connection Diagram	S17172	1	X								
13	Primary Coil Top Left	L5964-1/8631-5TC-L	1	X								
14	Primary Coil Center	L5964-1/8631-5TC-L	1	X								
15	Primary Coil Top Right	L5963-1/8631-5TR	1	X								
16	Primary Coil Bottom Left	L5964-2/8631-55	1	X								
17	Primary Coil Bottom Center	L5964-2/8631-55	1	X								
18	Primary Coil Bottom Right	L5964-2/8631-55	1	X								
19	Secondary Coil Bottom	S16261-2	3	X								
20	Secondary Coil Top	S16261-1	3	X								
	(Code 8632) Complete Transformer Assembly 220/440/3/50	L6612-1	1	X								
	Wiring Diagram	L6634	1	X								
	Input Connection Diagram	S17172	1	X								
13	Primary Coil Top Left	L5964-1/8631-5TC-L	1	X								

#

Indicates a change this printing.

Use only the parts marked "x" in the column under the heading number called for in the model index page.

* Recommended Spare Part

ITEM	DESCRIPTION	PART NO.	QTY.	1	2	3	4	5	6	7	8	9
14	Primary Coil Center	L5964-1/8631-5TC-L	1	X								
15	Primary Coil Top Right	L5963-1/8631-5TR	1	X								
16	Primary Coil Bottom Left	L5964-2/8631-55	1	X								
17	Primary Coil Bottom Center	L5964-2/8631-55	1	X								
18	Primary Coil Bottom Right	L5964-2/8631-55	1	X								
19	Secondary Coil Bottom	S16261-2	1	X								
20	Secondary Coil Top	S16261-1	1	X								
	(Code 8640) Complete Transformer Assembly 220/380/440/3/50/60 Wiring Diagram	L6612-2	1	X								
	Input Connection Diagram	L6634	1	X								
		M14358	1	X								
13	Primary Coil Top Left	L5964-3/8640-55	1	X								
14	Primary Coil Center	L5964-3/8640-55	1	X								
15	Primary Coil Top Right	L5963-2/8640-5TR	1	X								
16	Primary Coil Bottom Left	L5964-3/8640-55	1	X								
17	Primary Coil Bottom Center	L5964-3/8640-55	1	X								
18	Primary Coil Bottom Right	L5964-3/8640-55	1	X								
19	Secondary Coil Bottom	S16261-2	1	X								
20	Secondary Coil Top	S16261-1	1	X								
	(Code 8641) Complete Transformer Assembly 460/3/60 Wiring Diagram	L6612-1	1	X								
	Input Connection Diagram	L6634	1	X								
		S17172	1	X								
13	Primary Coil Top Left	L5964-1/8631-5TC-L	1	X								
14	Primary Coil Center	L5964-1/8631-5TC-L	1	X								
15	Primary Coil Top Right	L5963-1/8631-5TR	1	X								
16	Primary Coil Bottom Left	L5964-2/8631-55	1	X								
17	Primary Coil Bottom Center	L5964-2/8631-55	1	X								
18	Primary Coil Bottom Right	L5964-2/8631-55	1	X								
19	Secondary Coil Bottom	S16261-2	1	X								
20	Secondary Coil Top	S16261-1	1	X								
	(Code 8642) Complete Transformer Assembly 380/3/50 Wiring Diagram	L6612-2	1	X								
	Input Connection Diagram	L6634	1	X								
		S17231	1	X								
13	Primary Coil Top Left	L5964-3/8640-55	1	X								
14	Primary Coil Center	L5964-3/8640-55	1	X								
15	Primary Coil Top Right	L5963-2/8640-5TR	1	X								
16	Primary Coil Bottom Left	L5964-3/8640-55	1	X								
17	Primary Coil Bottom Center	L5964-3/8640-55	1	X								
18	Primary Coil Bottom Right	L5964-3/8640-55	1	X								
19	Secondary Coil Bottom	S16261-2	1	X								
20	Secondary Coil Top	S16261-1	1	X								
	(Code 8644) Complete Transformer Assembly 415/3/50/60 Wiring Diagram	L6612-1	1	X								
	Input Connection Diagram	L6634	1	X								
		S17172	1	X								
13	Primary Coil Top Left	L5964-1/8644-5TC-L	1	X								
14	Primary Coil Center	L5964-1/8644-5TC-L	1	X								
15	Primary Coil Top Right	L5963-1/8644-5TR	1	X								
16	Primary Coil Bottom Left	L5964-2/8644-55	1	X								
17	Primary Coil Bottom Center	L5964-2/8644-55	1	X								

Indicates a change this printing.

Use only the parts marked "x" in the column under the heading number called for in the model index page.

* Recommended Spare Part

ITEM	DESCRIPTION	PART NO.	QTY.	1	2	3	4	5	6	7	8	9
18	Primary Coil Bottom Right	L5964-2/8644-55	1	X								
19	Secondary Coil Bottom	S16261-2	1	X								
20	Secondary Coil Top	S16261-1	1	X								
	(Code 8656) Complete Transformer Assembly 575/3/60	L6612-1	1	X								
	Wiring Diagram	L6634	1	X								
	Input Connection Diagram	S17172	1	X								
13	Primary Coil Top Left	L5964-1/8656-5TC-L	1	X								
14	Primary Coil Center	L5964-1/8656-5TC-L	1	X								
15	Primary Coil Top Right	L5963-1/8656-5TR	1	X								
16	Primary Coil Bottom Left	L5964-2/8656-55	1	X								
17	Primary Coil Bottom Center	L5964-2/8656-55	1	X								
18	Primary Coil Bottom Right	L5964-2/8656-55	1	X								
19	Secondary Coil Bottom	S16261-2	1	X								
20	Secondary Coil Top	S16261-1	1	X								
	(Code 8687) Complete Transformer Assembly 220/3/50	L6612-1	1	X								
	Wiring Diagram	L6634	1	X								
	Input Connection Diagram	S17172	1	X								
13	Primary Coil Top Left	L5964-1/8631-5TC-L	1	X								
14	Primary Coil Center	L5964-1/8631-5TC-L	1	X								
15	Primary Coil Top Right	L5963-1/8631-5TR	1	X								
16	Primary Coil Bottom Left	L5964-2/8631-55	1	X								
17	Primary Coil Bottom Center	L5964-2/8631-55	1	X								
18	Primary Coil Bottom Right	L5964-2/8631-55	1	X								
19	Secondary Coil Bottom	S16261-2	1	X								
20	Secondary Coil Top	S16261-1	1	X								
	(Code 8721) Complete Transformer Assembly 380/500/3/50/60	L6612-3	1	X								
	Wiring Diagram	L6634	1	X								
	Input Connection Diagram	S17344	1	X								
13	Primary Coil Top Left	L5964-1/8721-5TC-L	1	X								
14	Primary Coil Center	L5964-1/8721-5TC-L	1	X								
15	Primary Coil Top Right	L5963-1/8721-5TR	1	X								
16	Primary Coil Bottom Left	L6798/8721-55	1	X								
17	Primary Coil Bottom Center	L6798/8721-55	1	X								
18	Primary Coil Bottom Right	L6798/8721-55	1	X								
19	Secondary Coil Bottom	S16261-2	1	X								
20	Secondary Coil Top	S16261-1	1	X								
	(Code 8795) Complete Transformer Assembly 230/460/3/60	L6612-1	1	X								
	Wiring Diagram	L6634	1	X								
	Input Connection Diagram	S17172	1	X								
13	Primary Coil Top Left	L5964-1/8631-5TC-L	1	X								
14	Primary Coil Center	L5964-1/8631-5TC-L	1	X								
15	Primary Coil Top Right	L5963-1/8631-5TR	1	X								
16	Primary Coil Bottom Left	L5964-2/8631-55	1	X								
17	Primary Coil Bottom Center	L5964-2/8631-55	1	X								
18	Primary Coil Bottom Right	L5964-2/8631-55	1	X								
19	Secondary Coil Bottom	S16261-2	1	X								
20	Secondary Coil Top	S16261-1	1	X								

Indicates a change this printing.

Use only the parts marked "x" in the column under the heading number called for in the model index page.

* Recommended Spare Part

ITEM	DESCRIPTION	PART NO.	QTY.	1	2	3	4	5	6	7	8	9
	(Code 8796) Complete Transformer Assembly 220/380/440/3/50	L6612-2	1	X								
	Wiring Diagram	L6634	1	X								
	Input Connection Diagram	S17172	1	X								
13	Primary Coil Top Left	L5964-3/8640-5TC-L	1	X								
14	Primary Coil Center	L5964-3/8640-5TC-L	1	X								
15	Primary Coil Top Right	L5963-2/8640-5TR	1	X								
16	Primary Coil Bottom Left	L5964-3/8640-55	1	X								
17	Primary Coil Bottom Center	L5964-3/8640-55	1	X								
18	Primary Coil Bottom Right	L5964-3/8640-55	1	X								
19	Secondary Coil Bottom	S16261-2	1	X								
20	Secondary Coil Top	S16261-1	1	X								
	(Code 8797) Complete Transformer Assembly 460/3/60	L6612-1	1	X								
	Wiring Diagram	L6634	1	X								
	Input Connection Diagram	S17172	1	X								
13	Primary Coil Top Left	L5964-1/8644-5TC-L	1	X								
14	Primary Coil Center	L5964-1/8644-5TC-L	1	X								
15	Primary Coil Top Right	L5963-1/8644-5TR	1	X								
16	Primary Coil Bottom Left	L5964-2/8644-55	1	X								
17	Primary Coil Bottom Center	L5964-2/8644-55	1	X								
18	Primary Coil Bottom Right	L5964-2/8644-55	1	X								
19	Secondary Coil Bottom	S16261-2	1	X								
20	Secondary Coil Top	S16261-1	1	X								
	(Code 8812) Complete Transformer Assembly 260/3/50/60	L6612-1	1	X								
	Wiring Diagram	L6634	1	X								
	Input Connection Diagram	S17172	1	X								
13	Primary Coil Top Left	L5964-1/8812-5TC-L	1	X								
14	Primary Coil Center	L5964-1/8812-5TC-L	1	X								
15	Primary Coil Top Right	L5963-1/8812-5TR	1	X								
16	Primary Coil Bottom Left	L5964-2/8812-55	1	X								
17	Primary Coil Bottom Center	L5964-2/8812-55	1	X								
18	Primary Coil Bottom Right	L5964-2/8812-55	1	X								
19	Secondary Coil Bottom	S16261-2	1	X								
20	Secondary Coil Top	S16261-1	1	X								
	(Code 8905) Complete Transformer Assembly 380/500/3/50	L6612-3	1	X								
	Wiring Diagram	L6634	1	X								
	Input Connection Diagram	S17344	1	X								
13	Primary Coil Top Left	L5964-1/8721-5TC-L	1	X								
14	Primary Coil Center	L5964-1/8721-5TC-L	1	X								
15	Primary Coil Top Right	L5963-1/8721-5TR	1	X								
16	Primary Coil Bottom Left	L6798-2/8721-55	1	X								
17	Primary Coil Bottom Center	L6798-2/8721-55	1	X								
18	Primary Coil Bottom Right	L6798-2/8721-55	1	X								
19	Secondary Coil Bottom	S16261-2	1	X								
20	Secondary Coil Top	S16261-1	1	X								
	(Code 8961) Complete Transformer Assembly 460/3/60	L6612-1	1	X								
	Wiring Diagram	L6634	1	X								
	Input Connection Diagram	S17172	1	X								

Indicates a change this printing.

Use only the parts marked "x" in the column under the heading number called for in the model index page.

* Recommended Spare Part

ITEM	DESCRIPTION	PART NO.	QTY.	1	2	3	4	5	6	7	8	9
13	Primary Coil Top Left	L5964-1/8631-5TC-L	1	X								
14	Primary Coil Center	L5964-1/8631-5TC-L	1	X								
15	Primary Coil Top Right	L5963-1/8631-5TR	1	X								
16	Primary Coil Bottom Left	L5964-2/8631-55	1	X								
17	Primary Coil Bottom Center	L5964-2/8631-55	1	X								
18	Primary Coil Bottom Right	L5964-2/8631-55	1	X								
19	Secondary Coil Bottom	S16261-2	1	X								
20	Secondary Coil Top	S16261-1	1	X								
	(Code 8964) Complete Transformer Assembly 220/440/3/50	L6612-1	1	X								
	Wiring Diagram	L6634	1	X								
	Input Connection Diagram	S17172	1	X								
13	Primary Coil Top Left	L5964-1/8631-5TC-L	1	X								
14	Primary Coil Center	L5964-1/8631-5TC-L	1	X								
15	Primary Coil Top Right	L5963-1/8631-5TR	1	X								
16	Primary Coil Bottom Left	L5964-2/8631-55	1	X								
17	Primary Coil Bottom Center	L5964-2/8631-55	1	X								
18	Primary Coil Bottom Right	L5964-2/8631-55	1	X								
19	Secondary Coil Bottom	S16261-2	1	X								
20	Secondary Coil Top	S16261-1	1	X								
	(Code 8981) Complete Transformer Assembly 575/3/60	L6612-1	1	X								
	Wiring Diagram	L6634	1	X								
	Input Connection Diagram	S17172	1	X								
13	Primary Coil Top Left	L5964-1/8656-5TC-L	1	X								
14	Primary Coil Center	L5964-1/8656-5TC-L	1	X								
15	Primary Coil Top Right	L5963-1/8656-5TR	1	X								
16	Primary Coil Bottom Left	L5964-2/8656-55	1	X								
17	Primary Coil Bottom Center	L5964-2/8656-55	1	X								
18	Primary Coil Bottom Right	L5964-2/8656-55	1	X								
19	Secondary Coil Bottom	S16261-2	1	X								
20	Secondary Coil Top	S16261-1	1	X								
	(Code 9098) Complete Transformer Assembly 380/3/60	L6612-2	1	X								
	Wiring Diagram	L6634	1	X								
	Input Connection Diagram	S17231	1	X								
13	Primary Coil Top Left	L5964-3/9098-55	1	X								
14	Primary Coil Center	L5964-3/9098-55	1	X								
15	Primary Coil Top Right	L5963-1/9098-55-TR	1	X								
16	Primary Coil Bottom Left	L5964-3/9098-55	1	X								
17	Primary Coil Bottom Center	L5964-3/9098-55	1	X								
18	Primary Coil Bottom Right	L5964-3/9098-55	1	X								
19	Secondary Coil Bottom	S16261-2	1	X								
20	Secondary Coil Top	S16261-1	1	X								
	(Code 9099) Complete Transformer Assembly 460/3/60	L6612-1	1	X								
	Wiring Diagram	L6634	1	X								
	Input Connection Diagram	S17172	1	X								
13	Primary Coil Top Left	L5964-1/9099-5TC-L	1	X								
14	Primary Coil Center	L5964-1/9099-5TC-L	1	X								
15	Primary Coil Top Right	L5963-1/9099-5TR	1	X								
16	Primary Coil Bottom Left	L5964-2/9099-55	1	X								

Indicates a change this printing.

Use only the parts marked "x" in the column under the heading number called for in the model index page.

* Recommended Spare Part

ITEM	DESCRIPTION	PART NO.	QTY.	1	2	3	4	5	6	7	8	9
17	Primary Coil Bottom Center	L5964-2/9099-55	1	X								
18	Primary Coil Bottom Right	L5964-2/9099-55	1	X								
19	Secondary Coil Bottom	S16261-2	1	X								
20	Secondary Coil Top	S16261-1	1	X								
	(Code 9151) Complete Transformer Assembly 260/3/50	L6612-1	1	X								
	Wiring Diagram	L6634	1	X								
	Input Connection Diagram	S17172	1	X								
13	Primary Coil Top Left	L5964-1/8812-5TC-L	1	X								
14	Primary Coil Center	L5964-1/8812-5TC-L	1	X								
15	Primary Coil Top Right	L5963-1/8812-5TR	1	X								
16	Primary Coil Bottom Left	L5964-2/812-55	1	X								
17	Primary Coil Bottom Center	L5964-2/8812-55	1	X								
18	Primary Coil Bottom Right	L5964-2/8912-55	1	X								
19	Secondary Coil Bottom	S16261-2	1	X								
20	Secondary Coil Top	S16261-1	1	X								
	(Code 9337) Complete Transformer Assembly 460/3/60	L6612-2	1	X								
	Wiring Diagram	L6634	1	X								
	Input Connection Diagram	S17231	1	X								
13	Primary Coil Top Left	L5964-3/8640-5TC-L	1	X								
14	Primary Coil Center	L5964-3/8640-5TC-L	1	X								
15	Primary Coil Top Right	L5963-2/8640-5TR	1	X								
16	Primary Coil Bottom Left	L5964-3/8640-55	1	X								
17	Primary Coil Bottom Center	L5964-3/8640-55	1	X								
18	Primary Coil Bottom Right	L5964-3/8640-55	1	X								
19	Secondary Coil Bottom	S16261-2	1	X								
20	Secondary Coil Top	S16261-1	1	X								
	(Code 9475) Complete Transformer Assembly 550	L6612-1	1	X								
	Wiring Diagram	L6634	1	X								
	Input Connection Diagram	S17172	1	X								
13	Primary Coil Top Left	L5964-1/8656-5TC-L	1	X								
14	Primary Coil Center	L5964-1/8656-5TC-L	1	X								
15	Primary Coil Top Right	L5963-1/8656-5TR	1	X								
16	Primary Coil Bottom Left	L5964-2/8656-55	1	X								
17	Primary Coil Bottom Center	L5964-2/8656-55	1	X								
18	Primary Coil Bottom Right	L5964-2/8656-55	1	X								
19	Secondary Coil Bottom	S16261-2	1	X								
20	Secondary Coil Top	S16261-1	1	X								
	(Code 9572) Complete Transformer Assembly 230/460	L6612-1	1	X								
	Wiring Diagram	L8234	1	X								
	Input Connection Diagram	S17172	1	X								
13	Primary Coil Top Left	L5964-1/8631-5TC-L	1	X								
14	Primary Coil Center	L5964-1/8631-5TC-L	1	X								
15	Primary Coil Top Right	L5963-1/8631-5TR	1	X								
16	Primary Coil Bottom Left	L5964-2/8631-55	1	X								
17	Primary Coil Bottom Center	L5964-2/8631-55	1	X								
18	Primary Coil Bottom Right	L5964-2/8631-55	1	X								
19	Secondary Coil Bottom	S16261-2	1	X								
20	Secondary Coil Top	S16261-1	1	X								

Indicates a change this printing.

Use only the parts marked "x" in the column under the heading number called for in the model index page.

* Recommended Spare Part

ITEM	DESCRIPTION	PART NO.	QTY.	1	2	3	4	5	6	7	8	9
	(Code 9573) Complete Transformer Assembly 575	L6612-1	1	X								
	Wiring Diagram	L8234	1	X								
	Input Connection Diagram	S17172	1	X								
13	Primary Coil Top Left	L5964-1/8656-5TC-L	1	X								
14	Primary Coil Center	L5964-1/8656-5TC-L	1	X								
15	Primary Coil Top Right	L5963-1/8656-5TR	1	X								
16	Primary Coil Bottom Left	L5964-2/8656-55	1	X								
17	Primary Coil Bottom Center	L5964-2/8656-55	1	X								
18	Primary Coil Bottom Right	L5964-2/8656-55	1	X								
19	Secondary Coil Bottom	S16261-2	1	X								
20	Secondary Coil Top	S16261-1	1	X								
	(Code 9574) Complete Transformer Assembly 220/380/440	L6612-2	1	X								
	Wiring Diagram	L8234	1	X								
	Input Connection Diagram	M14358	1	X								
13	Primary Coil Top Left	L5964-3/8640-5TC-L	1	X								
14	Primary Coil Center	L5964-3/8640-5TC-L	1	X								
15	Primary Coil Top Right	L5963-2/8640-5TR	1	X								
16	Primary Coil Bottom Left	L5964-3/8640-55	1	X								
17	Primary Coil Bottom Center	L5964-3/8640-55	1	X								
18	Primary Coil Bottom Right	L5964-3/8640-55	1	X								
19	Secondary Coil Bottom	S16261-2	1	X								
20	Secondary Coil Top	S16261-1	1	X								
	(Code 9575) Complete Transformer Assembly 380/500	L6612-3	1	X								
	Wiring Diagram	L8234	1	X								
	Input Connection Diagram	S17344	1	X								
13	Primary Coil Top Left	L5964-1/8721-5TC-L	1	X								
14	Primary Coil Center	L5964-1/8721-5TC-L	1	X								
15	Primary Coil Top Right	L5963-1/8721-5TR	1	X								
16	Primary Coil Bottom Left	L6798/8721-55	1	X								
17	Primary Coil Bottom Center	L6798/8721-55	1	X								
18	Primary Coil Bottom Right	L6798/8721-55	1	X								
19	Secondary Coil Bottom	S16261-2	1	X								
20	Secondary Coil Top	S16261-1	1	X								
	(Code 9609) Complete Transformer Assembly 415	L6612-1	1	X								
	Wiring Diagram	L8234	1	X								
	Input Connection Diagram	S17172	1	X								
13	Primary Coil Top Left	L5964-1/8644-5TC-L	1	X								
14	Primary Coil Center	L5964-1/8644-5TC-L	1	X								
15	Primary Coil Top Right	L5963-1/8644-5TR	1	X								
16	Primary Coil Bottom Left	L5964-2/8644-55	1	X								
17	Primary Coil Bottom Center	L5964-2/8644-55	1	X								
18	Primary Coil Bottom Right	L5964-2/8644-55	1	X								
19	Secondary Coil Bottom	S16261-2	1	X								
20	Secondary Coil Top	S16261-1	1	X								
	(Code 9622) Complete Transformer Assembly 220/380/440/50/60	L6612-2	1	X								
	Wiring Diagram	L8234	1	X								
	Input Connection Diagram	M14358	1	X								

Indicates a change this printing.

Use only the parts marked "x" in the column under the heading number called for in the model index page.

* Recommended Spare Part

ITEM	DESCRIPTION	PART NO.	QTY.	1	2	3	4	5	6	7	8	9
13	Primary Coil Top Left	L5964-3/8640-5TC-L	1	X								
14	Primary Coil Center	L5964-3/8640-5TC-L	1	X								
15	Primary Coil Top Right	L5963-2/8640-5TR	1	X								
16	Primary Coil Bottom Left	L5964-3/8640-55	1	X								
17	Primary Coil Bottom Center	L5964-3/8640-55	1	X								
18	Primary Coil Bottom Right	L5964-3/8640-55	1	X								
19	Secondary Coil Bottom	S16261-2	1	X								
20	Secondary Coil Top	S16261-1	1	X								
	(Code 9623) Complete Transformer Assembly 415/50/60	L6612-1	1	X								
	Wiring Diagram	L8234	1	X								
	Input Connection Diagram	S17172	1	X								
13	Primary Coil Top Left	L5964-1/8644-5TC-L	1	X								
14	Primary Coil Center	L5964-1/8644-5TC-L	1	X								
15	Primary Coil Top Right	L5963-1/8644-5TR	1	X								
16	Primary Coil Bottom Left	L5964-2/8644-55	1	X								
17	Primary Coil Bottom Center	L5964-2/8644-55	1	X								
18	Primary Coil Bottom Right	L5964-2/8644-55	1	X								
19	Secondary Coil Bottom	S16261-2	1	X								
20	Secondary Coil Top	S16261-1	1	X								
	(Code 9919) Complete Transformer Assembly 230/460/3/60	L9002-1	1	X								
	Wiring Diagram	L9008	1	X								
	Input Connection Diagram	S17172	1	X								
13	Primary Coil Top Left	L5964-1/8631-5TC-L	1	X								
14	Primary Coil Center	L5964-1/8631-5TC-L	1	X								
15	Primary Coil Top Right	L5963-1/8631-5TR	1	X								
16	Primary Coil Bottom Left	L5964-2/8631-55	1	X								
17	Primary Coil Bottom Center	L5964-2/8631-55	1	X								
18	Primary Coil Bottom Right	L5964-2/8631-55	1	X								
19	Secondary Coil Bottom	S16261-4	1	X								
20	Secondary Coil Top	S16261-3	1	X								
	(Code 9920) Complete Transformer Assembly 575/3/60	L9002-1	1	X								
	Wiring Diagram	L9008	1	X								
	Input Connection Diagram	S17172	1	X								
13	Primary Coil Top Left	L5964-1/8656-5TC-L	1	X								
14	Primary Coil Center	L5964-1/8656-5TC-L	1	X								
15	Primary Coil Top Right	L5963-1/8656-5TR	1	X								
16	Primary Coil Bottom Left	L5964-2/8656-55	1	X								
17	Primary Coil Bottom Center	L5964-2/8656-55	1	X								
18	Primary Coil Bottom Right	L5964-2/8656-55	1	X								
19	Secondary Coil Bottom	S16261-4	1	X								
20	Secondary Coil Top	S16261-3	1	X								
	(Code 9921) Complete Transformer Assembly 220/380/440/3/50/60	L9002-2	1	X								
	Wiring Diagram	L9008	1	X								
	Input Connection Diagram	M14358	1	X								
13	Primary Coil Top Left	L5964-3/8640-5TC-L	1	X								
14	Primary Coil Center	L5964-3/8640-5TC-L	1	X								
15	Primary Coil Top Right	L5963-2/8640-5TR	1	X								
16	Primary Coil Bottom Left	L5964-3/8640-55	1	X								

#

Indicates a change this printing.

Use only the parts marked "x" in the column under the heading number called for in the model index page.

* Recommended Spare Part

ITEM	DESCRIPTION	PART NO.	QTY.	1	2	3	4	5	6	7	8	9
17	Primary Coil Bottom Center	L5964-3/8640-55	1	X								
18	Primary Coil Bottom Right	L5964-3/8640-55	1	X								
19	Secondary Coil Bottom	S16261-4	1	X								
20	Secondary Coil Top	S16261-3	1	X								
	(Code 9922) Complete Transformer Assembly 380/500/3/50/60 Wiring Diagram	L9002-3	1	X								
	Input Connection Diagram	L9008	1	X								
		S17344	1	X								
13	Primary Coil Top Left	L5964-1/8721-5TC-L	1	X								
14	Primary Coil Center	L5964-1/8721-5TC-L	1	X								
15	Primary Coil Top Right	L5963-1/8721-5TR	1	X								
16	Primary Coil Bottom Left	L5964-2/8721-55	1	X								
17	Primary Coil Bottom Center	L5964-2/8721-55	1	X								
18	Primary Coil Bottom Right	L5964-2/8721-55	1	X								
19	Secondary Coil Bottom	S16261-4	1	X								
20	Secondary Coil Top	S16261-3	1	X								
	(Code 9923) Complete Transformer Assembly 415/3/50/60 Wiring Diagram	L9002-1	1	X								
	Input Connection Diagram	L9008	1	X								
		S17172	1	X								
13	Primary Coil Top Left	L5964-1/8644-5TC-L	1	X								
14	Primary Coil Center	L5964-1/8644-5TC-L	1	X								
15	Primary Coil Top Right	L5963-1/8644-5TR	1	X								
16	Primary Coil Bottom Left	L5964-2/8644-55	1	X								
17	Primary Coil Bottom Center	L5964-2/8644-55	1	X								
18	Primary Coil Bottom Right	L5964-2/8644-55	1	X								
19	Secondary Coil Bottom	S16261-4	1	X								
20	Secondary Coil Top	S16261-1	1	X								
	(Code 9924) Complete Transformer Assembly 460/3/60 Wiring Diagram	L9002-2	1	X								
	Input Connection Diagram	L9008	1	X								
		M14358	1	X								
13	Primary Coil Top Left	L5964-3/8640-5TC-L	1	X								
14	Primary Coil Center	L5964-3/8640-5TC-L	1	X								
15	Primary Coil Top Right	L5963-2/8640-5TR	1	X								
16	Primary Coil Bottom Left	L5964-3/8640-55	1	X								
17	Primary Coil Bottom Center	L5964-3/8640-55	1	X								
18	Primary Coil Bottom Right	L5964-3/8640-55	1	X								
19	Secondary Coil Bottom	S16261-4	1	X								
20	Secondary Coil Top	S16261-3	1	X								
	(Code 9225) Complete Transformer Assembly 415/3/50/60 Wiring Diagram	L9002-1	1	X								
	Input Connection Diagram	L9002-1	1	X								
		S17172	1	X								
13	Primary Coil Top Left	L5964-1/8644-5TC-L	1	X								
14	Primary Coil Center	L5964-1/8644-5TC-L	1	X								
15	Primary Coil Top Right	L5963-1/8644-5TR	1	X								
16	Primary Coil Bottom Left	L5964-2/8644-55	1	X								
17	Primary Coil Bottom Center	L5964-2/8644-55	1	X								
18	Primary Coil Bottom Right	L5964-2/8644-55	1	X								
19	Secondary Coil Bottom	S16261-4	1	X								
20	Secondary Coil Top	S16261-3	1	X								

Indicates a change this printing.

Use only the parts marked "x" in the column under the heading number called for in the model index page.

* Recommended Spare Part

ITEM	DESCRIPTION	PART NO.	QTY.	1	2	3	4	5	6	7	8	9
	(Code 10293) Complete Transformer Assembly 380/500/3/50/60	L9002-3	1	X								
	Wiring Diagram	L9008	1	X								
	Input Connection Diagram	S17344	1	X								
13	Primary Coil Top Left	L5964-1/8721-5TC-L	1	X								
14	Primary Coil Center	L5964-1/8721-5TC-L	1	X								
15	Primary Coil Top Right	L5963-1/8721-5TR	1	X								
16	Primary Coil Bottom Left	L6798/8721-55	1	X								
17	Primary Coil Bottom Center	L6798/8721-55	1	X								
18	Primary Coil Bottom Right	L6798/8721-55	1	X								
19	Secondary Coil Bottom	S16261-4	1	X								
20	Secondary Coil Top	S16261-3	1	X								
21	Primary Secondary Insulation	S16333	6	X								
22A	Transformer Side Bracket	S17156-1	2	X								
22B	Transformer Side Bracket	S17156-2	2	X								
23	Misc. Flat	S16090-3	2	X								